

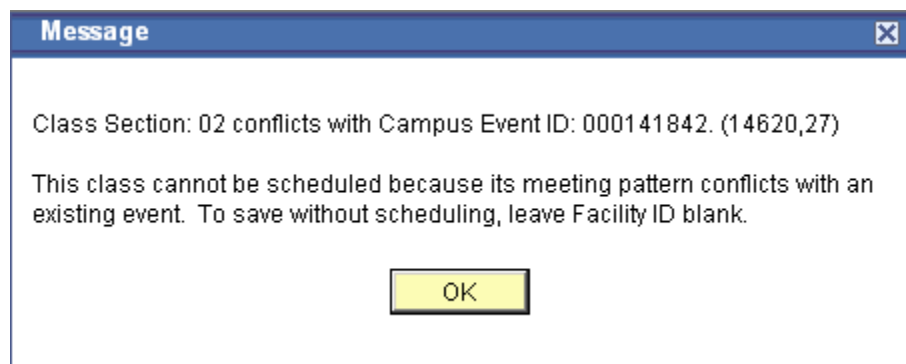


How do I? Look up an Event ID

Version 9.0

Event ID Conflict

When Scheduling Rooms you may encounter an error message regarding a conflict with an Event ID. Identify the Event ID number. In this example - 141842.



1. Click on Curriculum Management.
2. Click on Schedule of Classes.
3. Click on Class Event Table.
4. Enter the Event ID.
5. Click on Search .

This page will show the class information in the upper right corner and each meeting of the class in the grid below.