

# ESSENTIAL LEARNING & ASSESSMENT REVIEW COMMITTEE (ELARC): UW-Whitewater's Baccalaureate Learning Outcomes

## ELARC Members University of Wisconsin – Whitewater

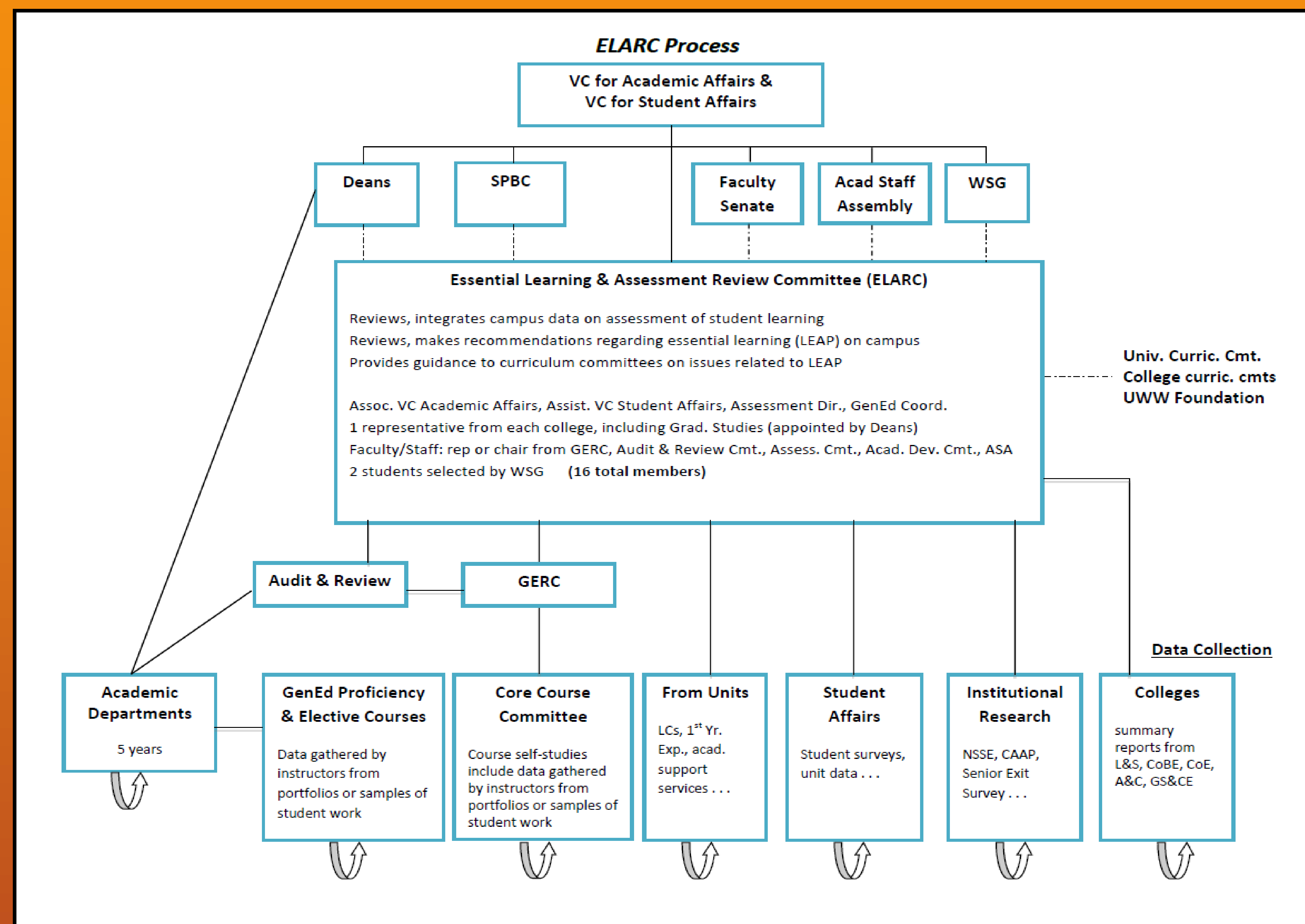
### Purpose of ELARC

The purpose of the Essential Learning & Assessment Review Committee (ELARC) is to ensure the regular and timely consideration of data from assessments of student learning and the use of these data in setting goals and making recommendations to improve teaching and learning at UW-Whitewater. Work is focused around the LEAP essential learning outcomes, adopted in Spring 2010 as our campus definition of the learning we expect for all bachelors degree recipients.

In part, this committee was formed in response to Barbara Walvoord's 2009 observation that UW-Whitewater lacks the "stomach" for assessment, i.e., a centralized committee or process that "digests" and uses assessment data for the benefit of the whole campus.

### How does ELARC work?

Assessment data (related to student learning and LEAP) flow up from courses, departments, colleges, and other units. ELARC reviews assessment data, integrates findings from across campus, and uses LEAP as the central organizing framework. The ELARC distills findings into an annual report of assessment highlights and recommended actions that can be taken to improve student learning that are practical and sustainable. This report is discussed by campus administrators and groups that represent faculty, staff, and students. The ELARC then provides an annual campus report back to colleges, departments, units, those responsible for core courses, and other constituents to complete the annual cycle.



### Committee Members, 2012-2013

Greg Cook	Associate Vice Chancellor for Academic Affairs
Brent Bilodeau	Assistant Vice Chancellor for Student Affairs
Joan Littlefield Cook	Director of Academic Assessment
Liz Hachten	Coordinator, General Education

#### From Colleges, appointed by Deans:

Sally Vogl-Bauer	College of Arts & Communication
Melanie Agnew	College of Education and Professional Studies
Lois Smith	College of Business and Economics
Jolly Emrey	College of Letters and Sciences
John Stone	Graduate Studies & Continuing Education

#### From faculty/staff elected committees:

Mark Schroeder	General Education Review Committee
Rowand Robinson	Audit and Review Committee
Paul Ambrose	University Assessment Committee
Leda Nath	Academic Development Committee
Denise Ehlen	Academic Staff Assembly

#### From Whitewater Student Government:

Joe Gaudet	Whitewater Student Government
Michael Heck	Whitewater Student Government

## RECOMMENDATIONS

1

Enhance a positive culture of assessment

Develop campus awards to recognize work on assessment of student learning

2

Allocate resources for assessment initiatives

5 Year Strategic Plan to advance assessment of LEAP ELOs

3

Develop rubrics that define learning and progression of learning for each LEAP ELO

4

Improve student writing

5

Improve student critical thinking