



July 8, 2014

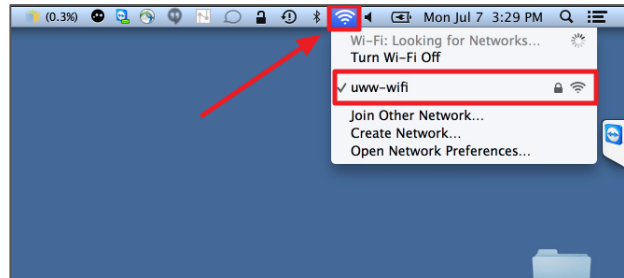
Connecting to Wi-Fi on a Mac

OVERVIEW

This guide will walk you through the steps to connect to the UW-Whitewater wireless network with your Mac.

Step 1

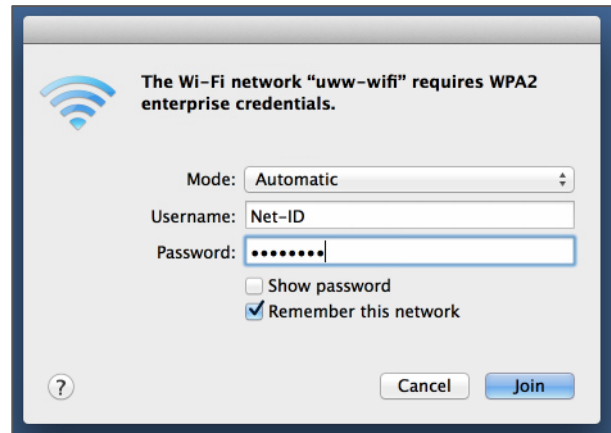
Click on the Wi-Fi icon located in the upper right-hand corner of the menu bar. Then, select “uww-wifi.”



Step 2

When prompted, enter your Net-ID and password. Click **Join** to continue.

You should now be joined to the UWW Wi-Fi network.

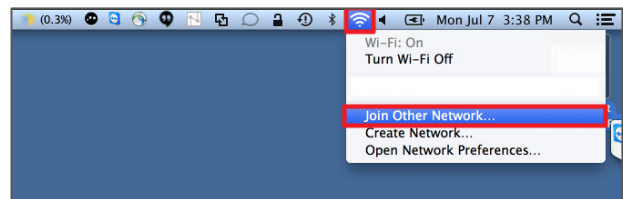


Manually Connect to the UWW Wi-Fi Network

If your computer is not able to detect the uww-wifi network, please follow the instructions below to configure the Wi-Fi connection manually.

Step 1

Click on the Wi-Fi icon located in the upper right-hand corner of the menu bar. Select **Join Other Network**.



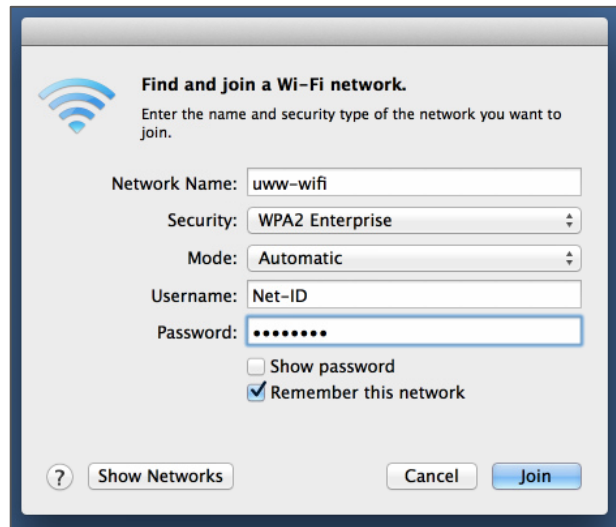
Step 2

Set the following options:

- Network Name: uww-wifi
- Security: WPA2 Enterprise
- Mode: Automatic
- Username: Your UWW Net-ID
- Password: Your UWW password

Check the box to “Remember this network.”
Click **Join** to continue.

You should now be joined to the UWW Wi-Fi network.



Verify the UWW Security Certificate

Step 1

If prompted to verify the “uww-wifi” certificate, click the **Show Certificate** button.



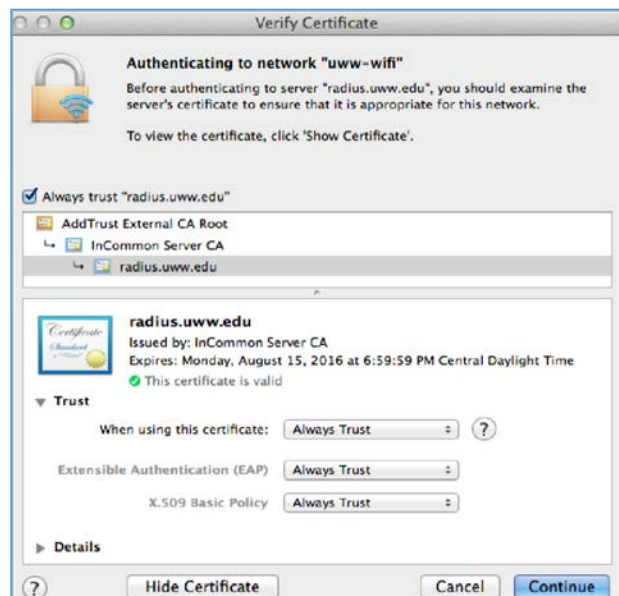
Step 2

Select the “Always trust radius.uww.edu” selection box.

Expand and select radius.uww.edu.

Under the “Trust” heading, set all available options to **Always Trust**.

Click **Continue** to save.



Step 3

If prompted to enter a user name and password to make changes to your certificate trust settings, please enter your “Mac” user name and password. Click **Update Settings** to continue.



Trouble Downloading or Installing?

Contact the Technology Support Center Helpdesk at helpdesk@uww.edu or (262) 472-4357.