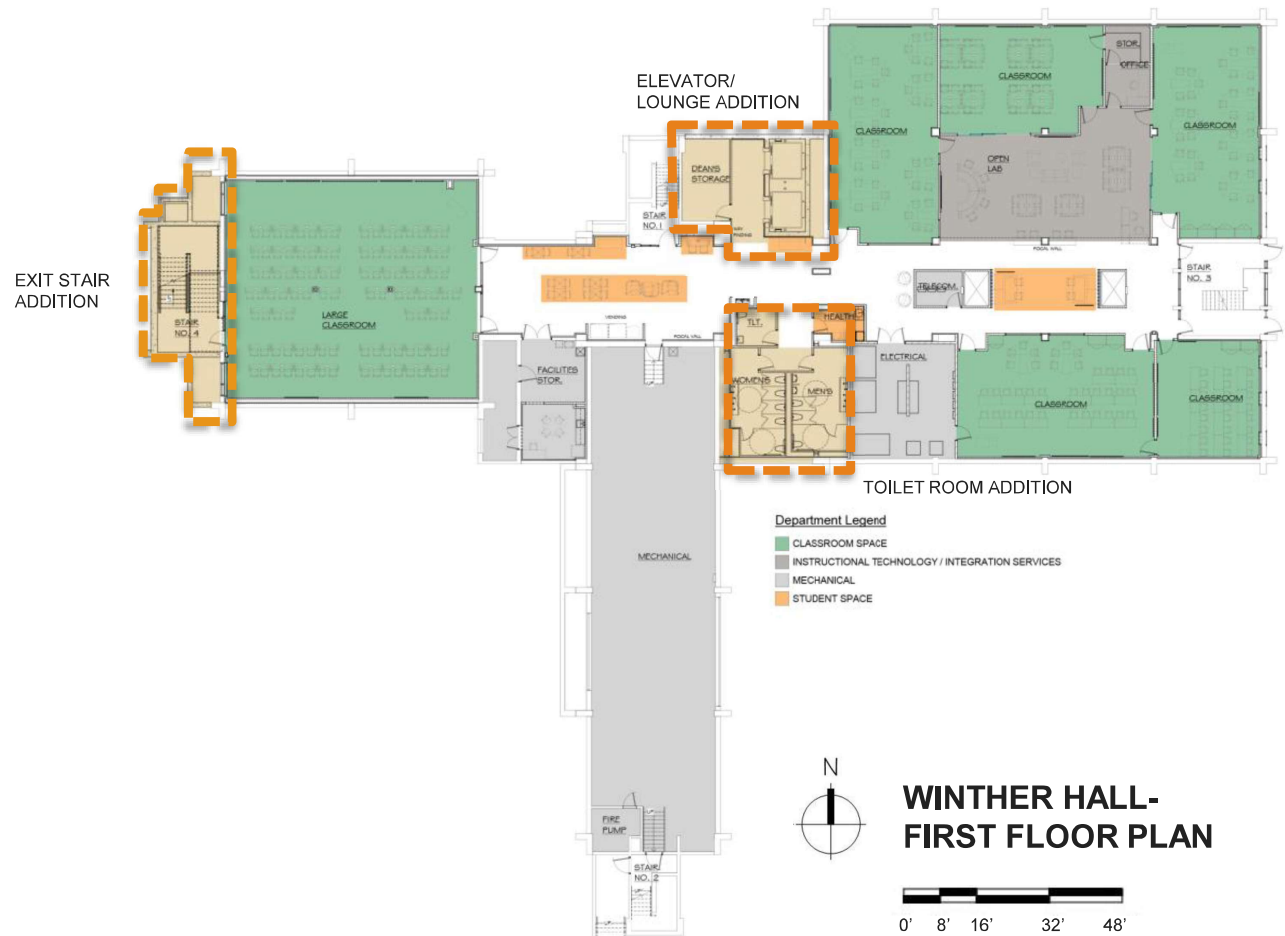


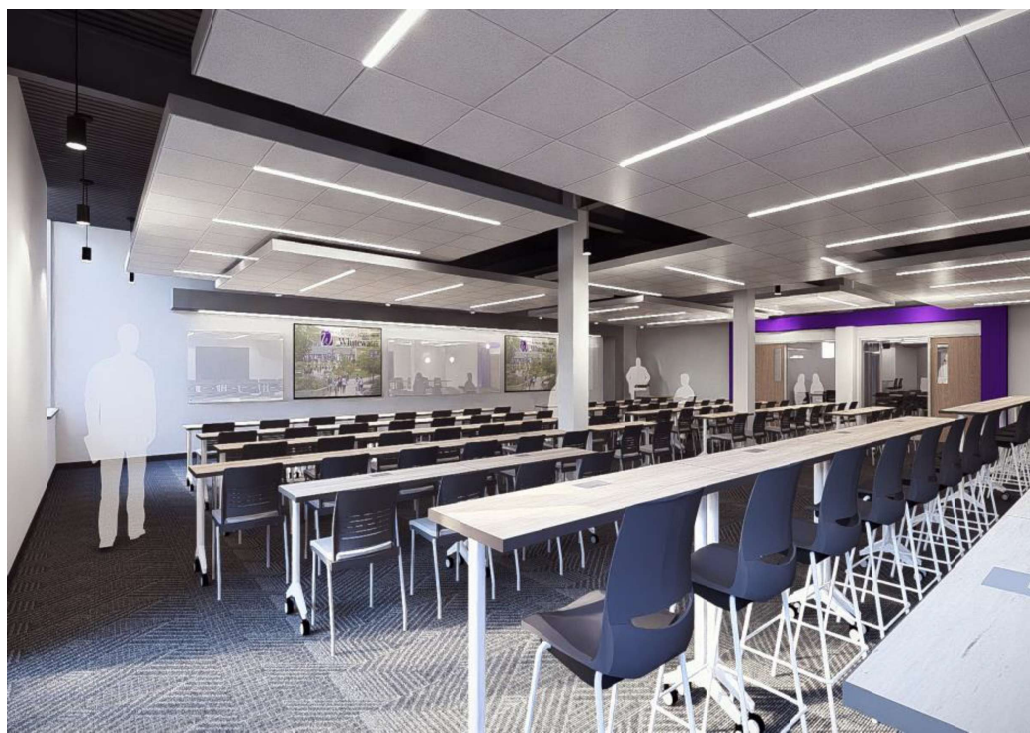


MAIN PROGRAM GOALS

Winther Hall

- Locate a Technology Center/ Lab in the east wing on the first floor
- Consistent location of restrooms (male, female and all gender) on each floor
- Provide student collaboration spaces throughout the building that are adjacent to main classrooms to encourage student interaction





1ST FLOOR LECTURE HALL LOOKING NORTH



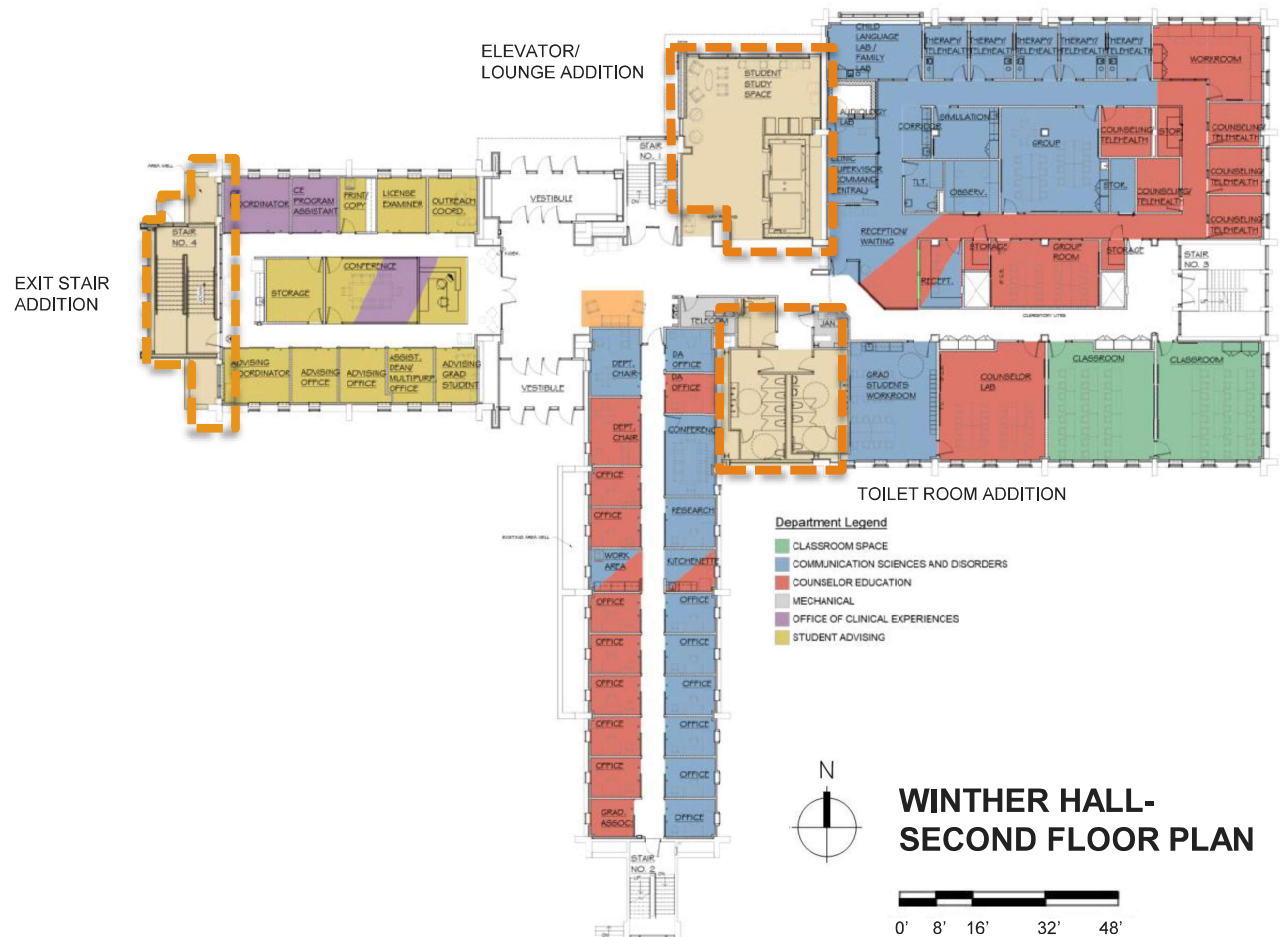
1ST FLOOR LECTURE HALL LOOKING EAST

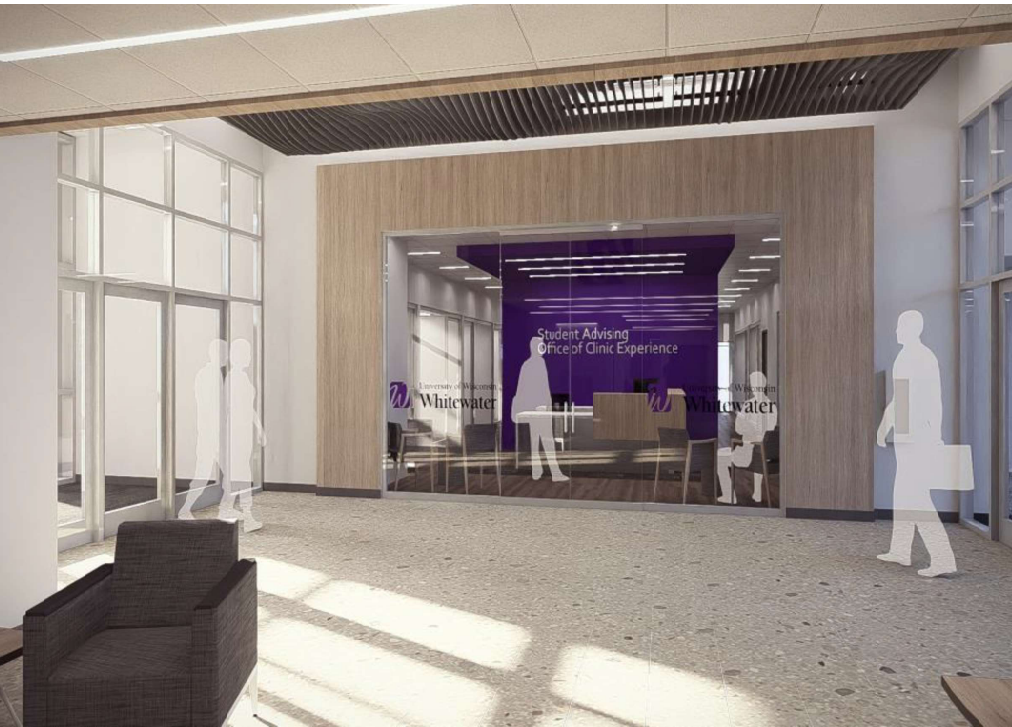


PROGRAM GOALS

Winther Hall – Second Floor (main floor)

- Locate a Communication Sciences and Disorders and Counseling Suite (blue/ red) that is in close proximity to the main entries.
- Create a Student Services suite in the west wing that is directly visible from the main entries and creates a first impression for visiting/ prospective students.
- Create a two-story atrium addition (adjacent to the elevator core) to add a welcoming lobby /student study space that doesn't currently exist.



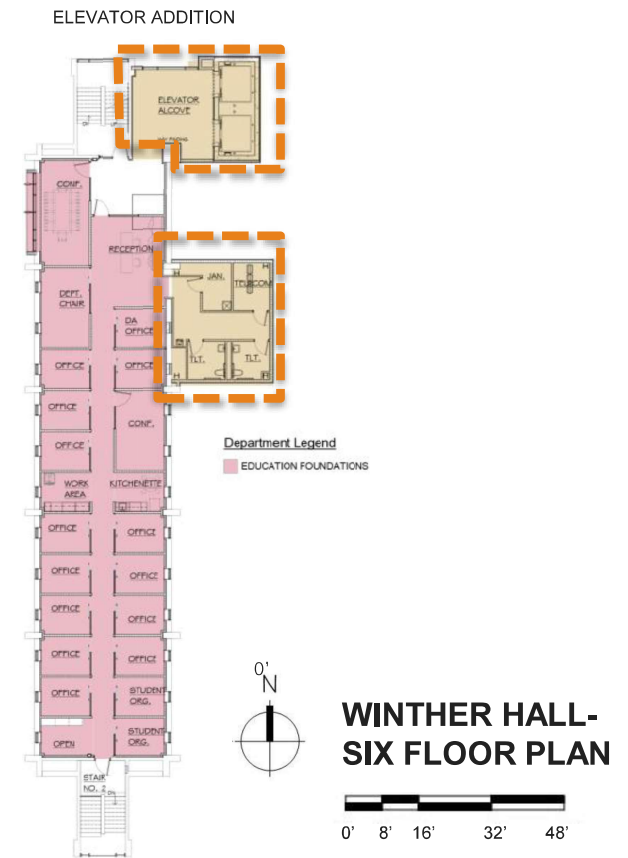
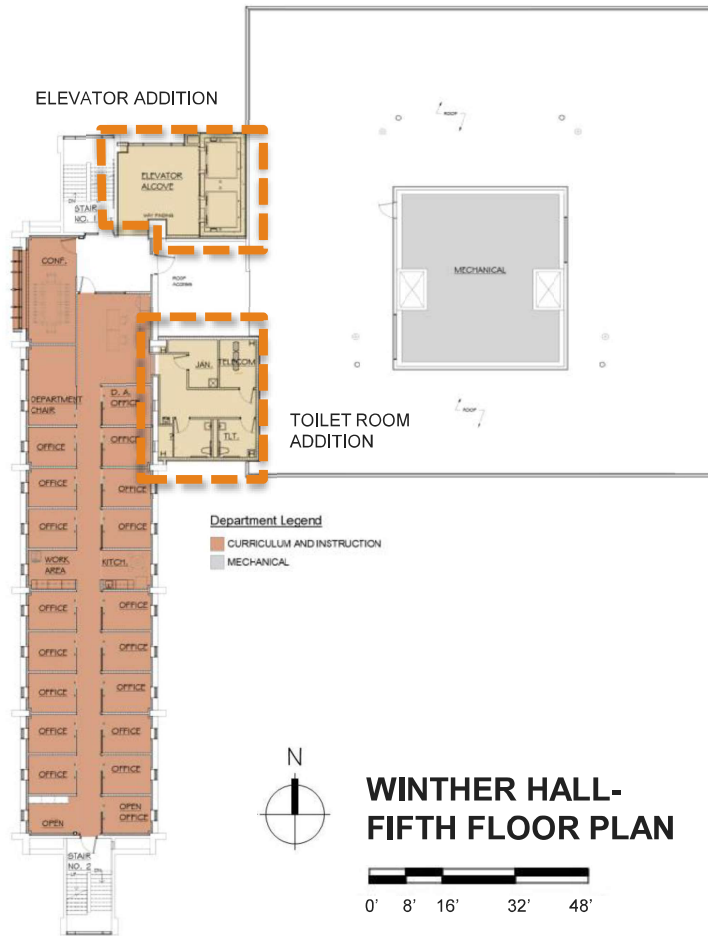


MAIN ENTRANCE LOOKING WEST



MAIN ENTRANCE LOOKING EAST







WINTHER HALL - ELEVATIONS



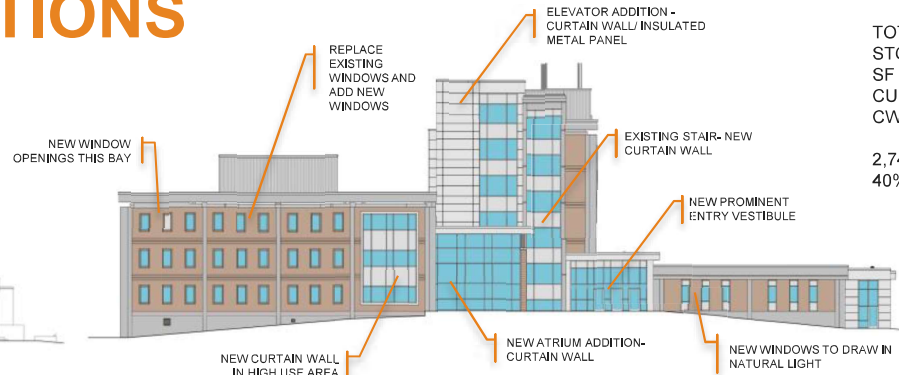
EXISTING NORTH ELEVATION

0' 8' 16' 32' 48'



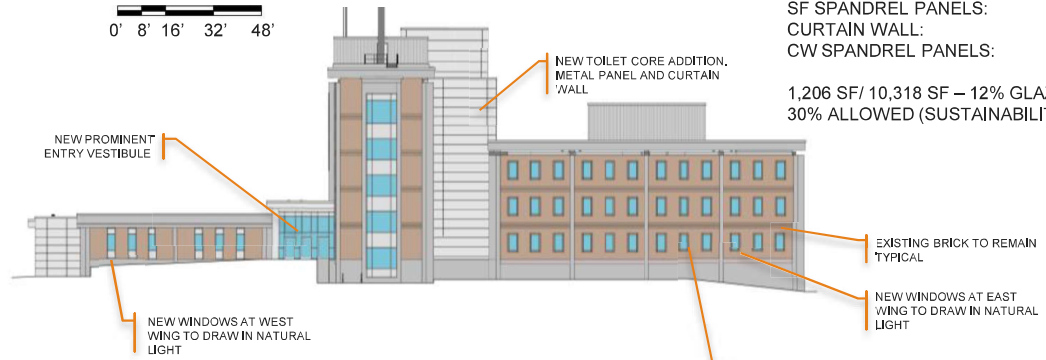
EXISTING SOUTH ELEVATION

0' 8' 16' 32' 48'



PROPOSED NORTH ELEVATION

0' 8' 16' 32' 48'



PROPOSED SOUTH ELEVATION

0' 8' 16' 32' 48'

TOTAL SURFACE AREA NORTH:	9,778 SF
STOREFRONT:	460 SF
SF SPANDREL PANELS:	14.22 SF
CURTAIN WALL:	2,280 SF
CW SPANDREL PANELS:	790 SF

2,740 SF / 9,778 SF – 28% GLAZING TO WALL
40% ALLOWED (SUSTAINABILITY GUIDELINES)

TOTAL SURFACE AREA SOUTH:	10,318 SF
STOREFRONT:	596 SF
SF SPANDREL PANELS:	72 SF
CURTAIN WALL:	610 SF
CW SPANDREL PANELS:	240 SF

1,206 SF / 10,318 SF – 12% GLAZING TO WALL
30% ALLOWED (SUSTAINABILITY GUIDELINES)



WINTHER HALL - ELEVATIONS



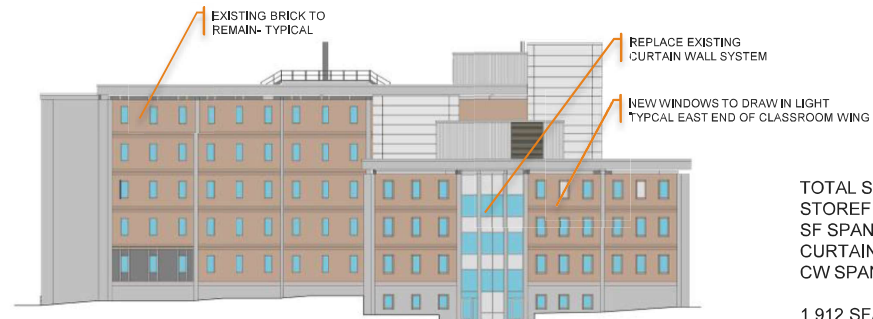
EXISTING EAST ELEVATION

0' 8' 16' 32' 48'



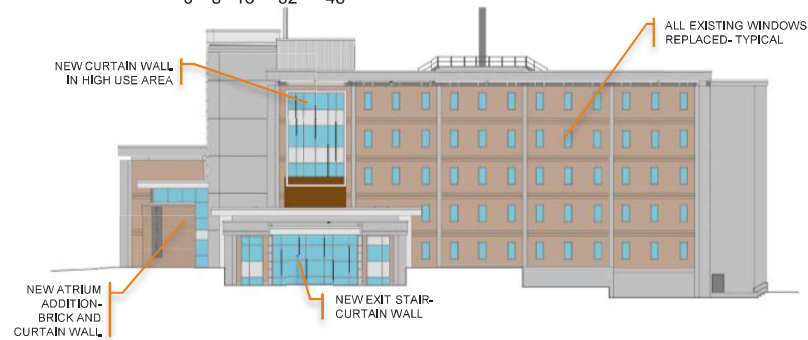
EXISTING WEST ELEVATION

0' 8' 16' 32' 48'



PROPOSED EAST ELEVATION

0' 8' 16' 32' 48'



PROPOSED WEST ELEVATION

0' 8' 16' 32' 48'

TOTAL SURFACE AREA EAST:	13,733 SF
STOREFRONT:	1,010 SF
SF SPANDREL PANELS:	28.4 SF
CURTAIN WALL:	902 SF
CW SPANDREL PANELS:	391 SF

1,912 SF/ 13,733 SF – 14% GLAZING TO WALL
30% ALLOWED (SUSTAINABILITY GUIDELINES)

TOTAL SURFACE AREA WEST:	13,016 SF
STOREFRONT:	697 SF
SF SPANDREL PANELS:	0 SF
CURTAIN WALL:	1,090 SF
CW SPANDREL PANELS:	234 SF

1,787 SF/ 13,016 SF – 14% GLAZING TO WALL
40% ALLOWED (SUSTAINABILITY GUIDELINES)



WINTHER - NORTH FACADE



WINTHER - WEST FACADE



WINTHER - WEST AND SOUTH FACADE



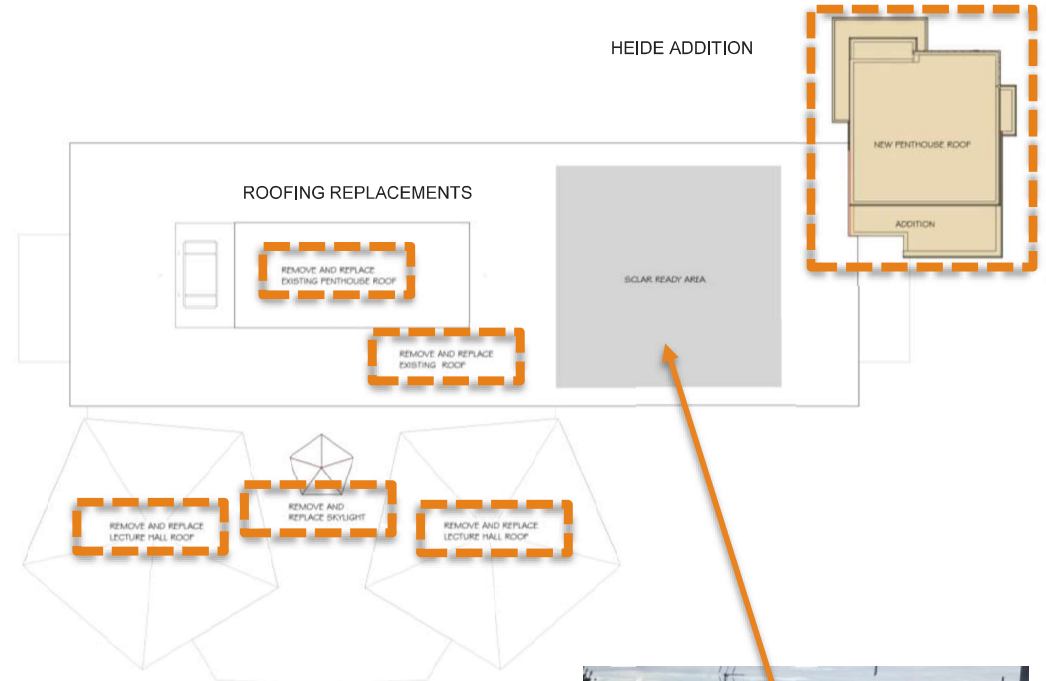
WINTHER- SOUTH AND EAST FACADE



SUSTAINABILITY GOALS

Heide Hall

- Solar Arrays will be further explored for the area in grey
- Demand Controlled Ventilation
- Energy Recovery- enthalpy wheels within the air handlers as required by 2015 IECC
- Low flow plumbing fixtures
- Increase roofing insulation with re-roof
- Thermally efficient window glazing



HEIDE HALL- ROOF PLAN

0' 8' 16' 32' 48'

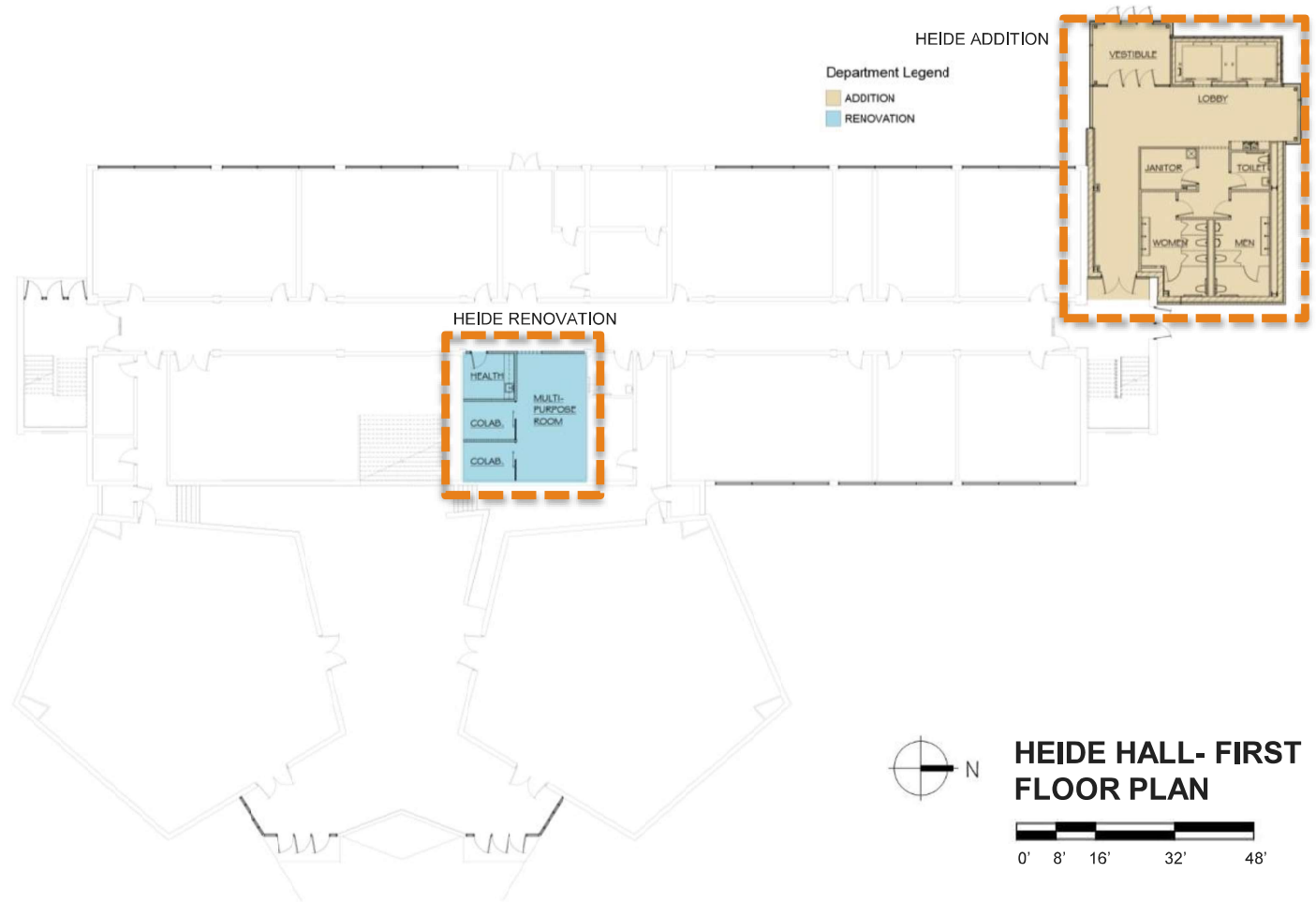


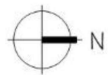
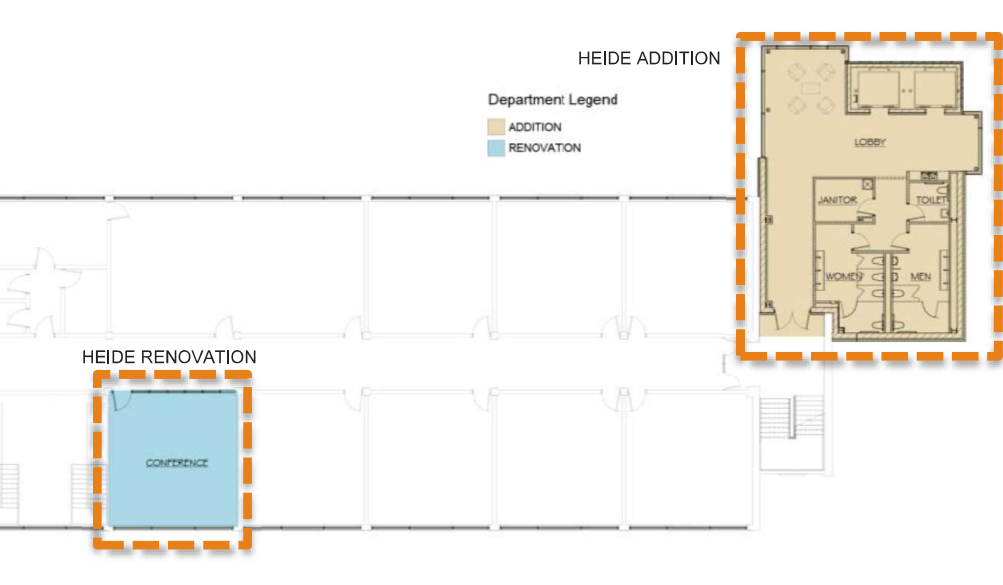


MAIN PROGRAM GOALS

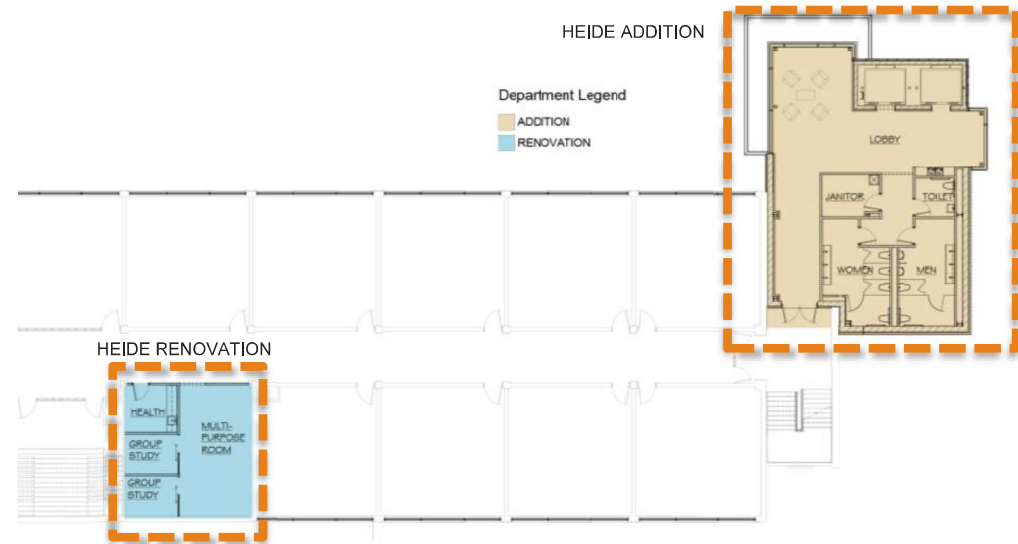
Heide Hall

- Increase accessibility of vertical circulation and access to restrooms
- Create a more prominent northwest entry which faces the center of campus
- Create collaboration spaces, which are lacking currently

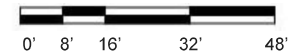


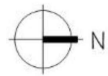
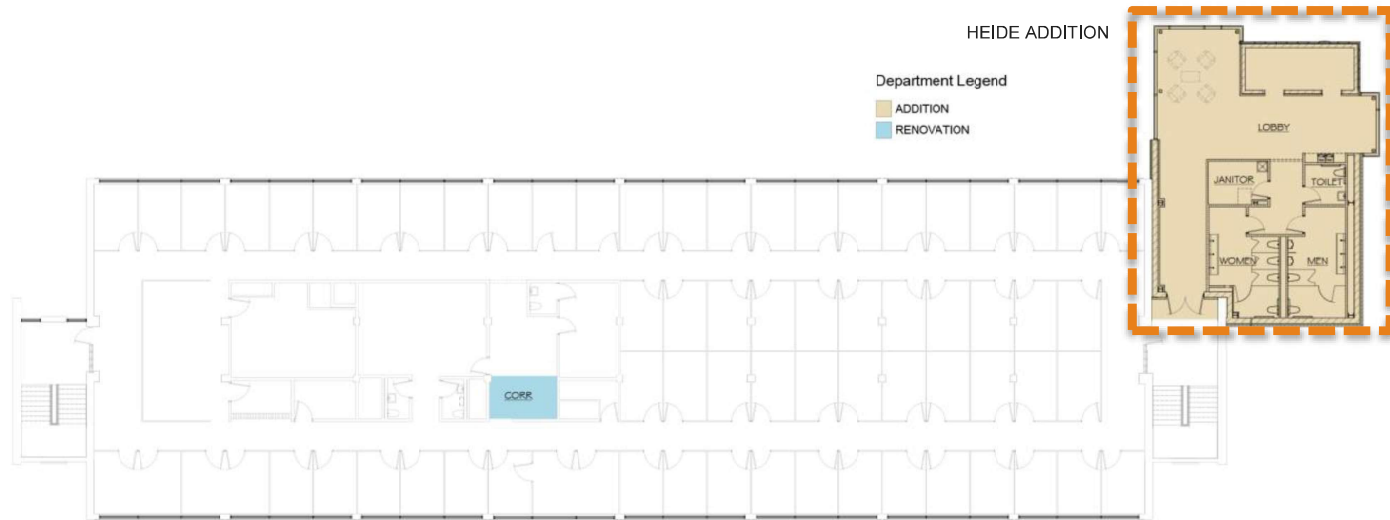


HEIDE HALL- THIRD FLOOR PLAN



HEIDE HALL- SECOND FLOOR PLAN



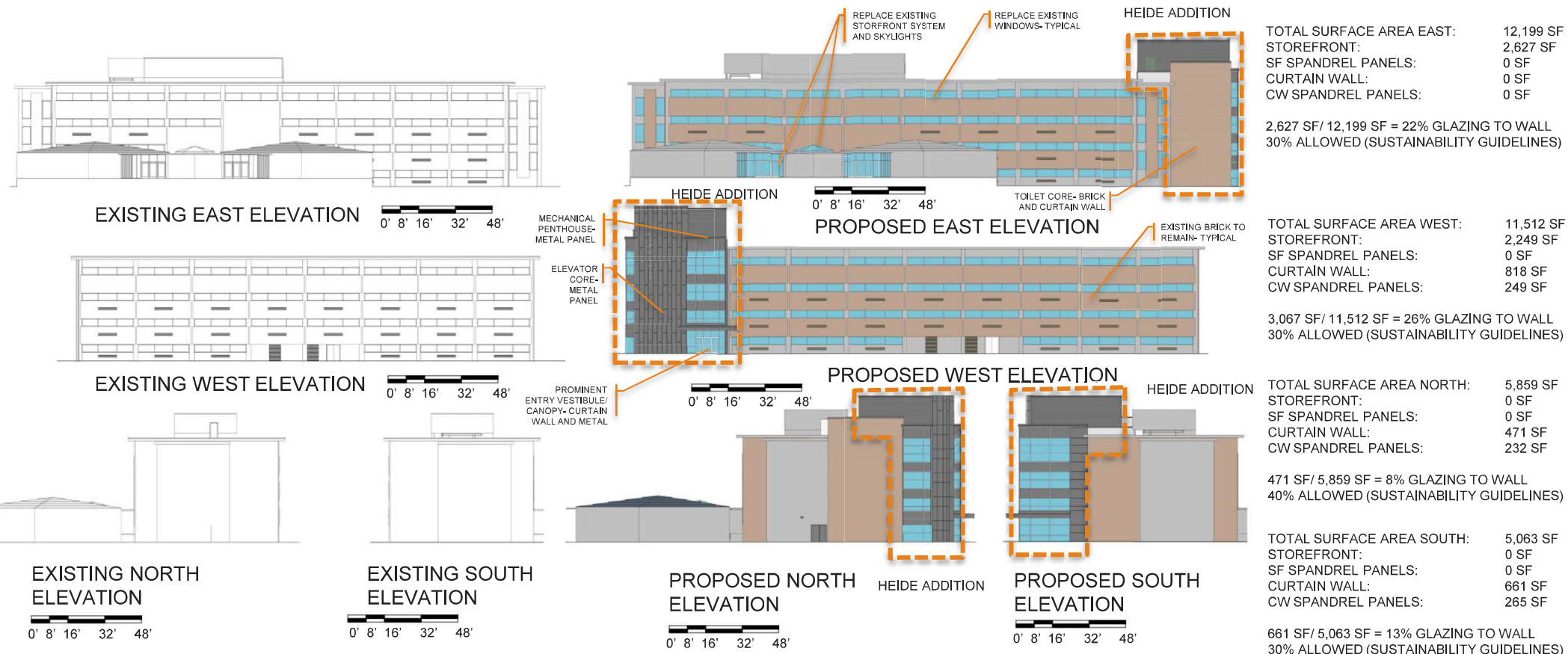


HEIDE HALL- FOURTH FLOOR PLAN





HEIDE HALL- ELEVATIONS



TOTAL SURFACE AREA EAST:	12,199 SF
STOREFRONT:	2,627 SF
SF SPANDREL PANELS:	0 SF
CURTAIN WALL:	0 SF
CW SPANDREL PANELS:	0 SF

2,627 SF / 12,199 SF = 22% GLAZING TO WALL
30% ALLOWED (SUSTAINABILITY GUIDELINES)

TOTAL SURFACE AREA WEST:	11,512 SF
STOREFRONT:	2,249 SF
SF SPANDREL PANELS:	0 SF
CURTAIN WALL:	818 SF
CW SPANDREL PANELS:	249 SF

3,067 SF / 11,512 SF = 26% GLAZING TO WALL
30% ALLOWED (SUSTAINABILITY GUIDELINES)

TOTAL SURFACE AREA NORTH:	5,859 SF
STOREFRONT:	0 SF
SF SPANDREL PANELS:	0 SF
CURTAIN WALL:	471 SF
CW SPANDREL PANELS:	232 SF

471 SF / 5,859 SF = 8% GLAZING TO WALL
40% ALLOWED (SUSTAINABILITY GUIDELINES)

TOTAL SURFACE AREA SOUTH:	5,063 SF
STOREFRONT:	0 SF
SF SPANDREL PANELS:	0 SF
CURTAIN WALL:	661 SF
CW SPANDREL PANELS:	265 SF

661 SF / 5,063 SF = 13% GLAZING TO WALL
30% ALLOWED (SUSTAINABILITY GUIDELINES)



HEIDE - WEST FACADE



HEIDE - WEST FACADE

