



University of Wisconsin
Whitewater

**FREE
AIRFARE**

WHEN BOOKED BY
3/31/2021



Tulip Time on Jewels of the Rhine

the Netherlands • Germany • France • Switzerland

Tour Dates: April 16th – 26th, 2022


Mayflower
CRUISES & TOURS
A DIVISION OF THE SCENIC GROUP

Tulip Time on Jewels of the Rhine



Flowers and fragrances fill Keukenhof Gardens



Enjoy seven-nights cruising along the Romantic Rhine River

DAY 1 Depart the USA: Depart the USA on your overnight flight to Amsterdam, the Netherlands.

DAY 2 Amsterdam, the Netherlands: Welcome to Amsterdam, a fascinating 700-year-old city of picturesque canals, world class museums, theatres and cafés. You will be met and transferred from the airport to your Emerald Waterways luxury river cruise ship. Become acquainted with the amenities of your ship, or begin exploring the city. This evening, join your fellow travelers for dinner onboard. **Meal: D**

DAY 3 Keukenhof Gardens: This morning, depart by coach for an included visit to Keukenhof Gardens. Discover why it's called the 'Garden of Europe' as you admire gorgeous flowers at the peak of tulip season. Return to the ship for your first day cruising through the Dutch countryside, passing windmills and sailing through locks towards the Rhine River. Tonight, enjoy a welcome reception and gala dinner. **Meals: B, L, D**

EmeraldPLUS: A visit to Keukenhof Gardens

DAY 4 Cologne, Germany: Cruise along the Rhine River to Cologne. Founded by the Romans, the city is one of Germany's oldest and famous for its magnificent World-Heritage listed gothic cathedral. This afternoon upon arrival, join your local guide for an included walking tour of the city, touching on the historical charm of the Old Town. Traverse quaint alleyways and see historic monuments. The tour concludes at the cathedral, whose twin spires dominate the skyline. **Meals: B, L, D**

DiscoverMORE: Farina Eau de Cologne Museum (additional expense)

DAY 5 Koblenz: Cruise to the 2000-year-old town of Koblenz, situated at the confluence of the Rhine and Moselle Rivers. Enjoy a walking tour of Koblenz and visit the Ehrenbreitstein Fortress by cable car on the opposite side of the river. This fortress was part of the Prussian defense against the French

in the 19th century and later used as a headquarters for the American military during WWII. This afternoon, sail through the spectacular UNESCO World-Heritage listed Rhine Gorge. Pass countless medieval castles and vineyards lining the shores of this section of the river, with photo opportunities around every bend. See the infamous Lorelei statue and Pfalzgrafenstein Castle, built on an island in the middle of the river as a medieval toll station. **Meals: B, L, D**

DiscoverMORE: Moselle & Cochem (Reichsburg) Castle Visit (additional expense)

NOTE: You can choose either the included tour of Koblenz OR the DiscoverMORE option, as both tours operate at the same time.

DAY 6 Mannheim / Heidelberg: Continue sailing to the town of Mannheim, located at the confluence of the Rhine and Neckar Rivers. From there, travel by coach to Heidelberg where you have the opportunity to either visit the medieval town of Heidelberg on a walking tour and enjoy a wine tasting, or take part in an active hike to Heidelberg Hill. **Meals: B, L, D**

EmeraldACTIVE: Hike from Mount Königstuhl to Heidelberg (instead of city tour)

DiscoverMORE: Evening Concert at Bruchsal Palace (additional expense)

DAY 7 Kehl / Strasbourg, France: Once docked in Kehl, travel by coach across the river to Strasbourg, the capital of the Alsace region in France. Your guided walking tour includes the Grande Île - the historical city center and UNESCO World Heritage Site. Known for its medieval black and white timber-framed buildings, old tanning houses, baroque sandstone buildings, canals and river locks, the city's star attraction is the cathedral, dominating the main square. **Meals: B, L, D**

DiscoverMORE: Tour of Riquewihr (additional expense)

DAY 8 Breisach, Germany: On today's adventure, visit a typical Black Forest village, full of charm, cuckoo clocks and



Cross the Reuss River via the historic Chapel Bridge in Lucerne, Switzerland

other German specialties. Enjoy a demonstration of how Black Forest Cake is made and sample this local treat. Alternatively, take part in a guided hike along some of the Black Forest trails.

Meals: B, L, D

EmeraldPLUS: Black Forest Cake demonstration and tasting

EmeraldACTIVE: Guided hike in the Black Forest region (instead of included tour)

DAY 9 Basel – Lucerne, Switzerland: After breakfast, disembark the ship in Basel and begin your Swiss adventure. Depart by coach to Lucerne, a picturesque town surrounded by mountains and meadows. An included walking tour highlights the city's landmark - the famous 14th-century Chapel Bridge. See the 17th-century Renaissance Town Hall and town squares, all set amongst the beautiful backdrop of the Swiss Alps. The remainder of the day is at leisure. **Meal: B**

DAY 10 Lucerne: Your last day is left free of planned activities. Explore on your own, or join the optional excursion to Mt. Pilatus – a mountain overlooking Lucerne that offers a unique alpine experience! This evening, get together for an included dinner at the hotel. **Meals: B, D**

DAY 11 Lucerne / USA: Bid 'auf wiedersehen' to Europe and return home with memories of life enriching experiences from your European adventure and cruise along the Rhine River during tulip time. **Meal: B**

Itinerary is subject to change.

CRUISE AND HOTEL ACCOMMODATIONS

Days 2 through 8 – Aboard an Emerald Waterways Star-Ship

Days 9 and 10 – Hotel Europe or similar, Lucerne, Switzerland

Pre-cruise hotel stays available in Amsterdam. Call for details.



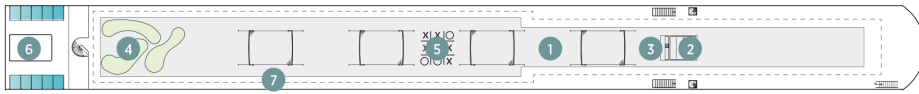
Exceptional Inclusions

- **23 Meals:** 9 breakfasts, 6 lunches and 8 dinners
- **Airport transfers** on tour dates when air is provided by Mayflower Cruises & Tours
- Visit **four countries**
- **Seven-nights in a suite or stateroom** of your choice onboard the vessel
- **First-class service** by an English-speaking crew
- **Onboard Activity Manager** will support all EmeraldACTIVE excursions and host daily onboard wellness activities, games, classes and evening entertainment
- **All gratuities included**
- Explore the magnificent **Keukenhof Gardens**
- **Shore excursions** with English-speaking local guides
- Visit **UNESCO World Heritage Sites**
- Personal **listening device** for shore excursions
- **All meals included** onboard
- Variety of **international cuisine**
- Complimentary **regional wines, beer and soft drinks** with onboard lunches and dinners
- Complimentary **bottled water** in your stateroom
- Complimentary **WiFi onboard**
- Complimentary **bicycles** onboard for use ashore
- **All port charges included**
- **Two-night hotel stay and touring in Lucerne**
- **\$55 in Mayflower Money**

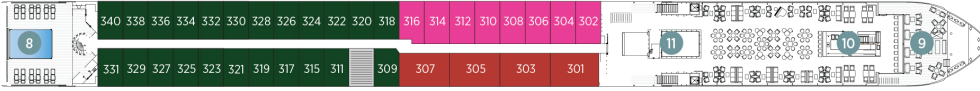
Emerald Waterways Star-Ships

Built: 2014-20 **Speed:** 15.5 mph **Staterooms:** 19 **Suites:** 72 **Length:** 443 ft. **Crew:** 47

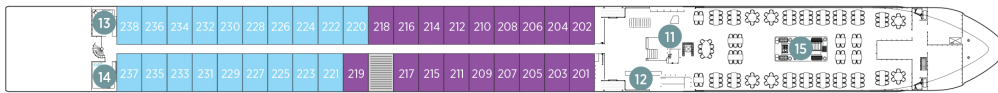
SUN DECK



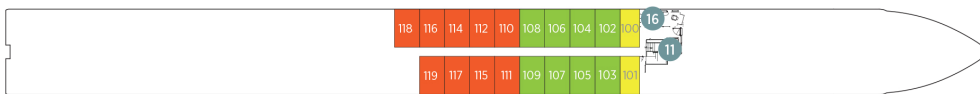
HORIZON DECK



VISTA DECK

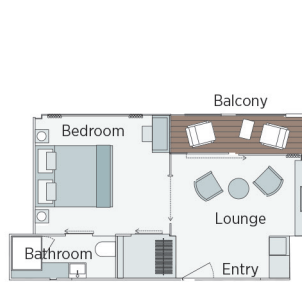


RIVIERA DECK



Public Areas and Ship Amenities

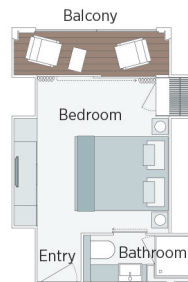
- 1 Sun Deck with Deck Chairs
- 2 Navigation Bridge
- 3 Sky Barbecue
- 4 Golf Putting Green
- 5 Games Area
- 6 Retractable Glass Roof
- 7 Walking Track
- 8 Daytime Pool & Bar / Evening Cinema
- 9 The Terrace
- 10 Horizon Bar and Lounge
- 11 Elevator
- 12 Reception
- 13 Wellness Area
- 14 Fitness Area
- 15 Reflections Restaurant
- 16 Hairdresser



Owner's One-Bedroom Suite

315ft²

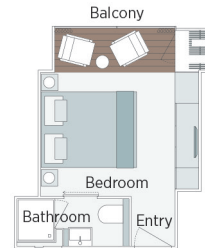
CAT SA



Grand Balcony Suite

210ft²

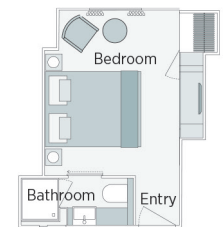
CAT S



Panorama Balcony Suite

180ft²

CAT A CAT B CAT C



Emerald Stateroom

162ft²

CAT D CAT E

2022 Departure Date
Tulip Time on Jewels of the Rhine

		APR 16	
CAT	STATEROOM / SUITE	DECK	
E	Emerald Stateroom	Riviera	PER PERSON TWIN \$4,449 SINGLE ROOM ADD + \$2,894
D	Emerald Stateroom	Riviera	PER PERSON TWIN \$4,549 SINGLE ROOM ADD + \$2,959
C	Panorama Balcony Suite	Vista	PER PERSON TWIN \$5,099 SINGLE ROOM ADD + \$3,314
B	Panorama Balcony Suite	Vista	PER PERSON TWIN \$5,349 SINGLE ROOM ADD + \$3,479
A	Panorama Balcony Suite	Horizon	PER PERSON TWIN \$5,599 SINGLE ROOM ADD + \$3,639
S	Grand Balcony Suite	Horizon	PER PERSON TWIN \$5,999 SINGLE ROOM ADD N/A
SA	Owner's One-Bedroom Suite	Horizon	PER PERSON TWIN \$6,799 SINGLE ROOM ADD N/A

Mayflower Cruises & Tours' Guaranteed Share Program is available on the Riviera, Vista, and Horizon Decks standard staterooms only.

Travelers Protection Plan (TPP) for River Cruises - \$450 per person (optional)

This nonrefundable fee will provide a refund to you during the instance that you have to cancel your trip. The cancellation has to be for a covered reason (see Plan for details on coverage) and we have to be notified at least one day prior to departure. If you must leave the tour early due to personal illness or the illness or death of an immediate family member, TPP will provide a refund for any unused services after the departure of the tour. Other benefits include medical expenses for illness and injury, emergency transportation, 24 hour hot line and lost or stolen baggage assistance. Return air transportation is included ONLY if your air tickets are purchased through Mayflower Cruises & Tours. Please review the Plan for details on coverage. Should you choose not to purchase our TPP, the following per person cancellation charges will be assessed for all tours and optional excursion costs:

- 91 days or more prior to departure: Deposit Amount
- 90 days to day of departure: 100% of total tour
- No refund on unused portions of the tour

Exclusions: Mayflower Cruises & Tours reserves the right to alter its Refund and Cancellation Policy when a substantial amount of cancellation or postponement of travel is attributable to: conditions resulting from an act of God, natural or man-made disaster, fire, government action, civil disorder, war, hostilities between nations, or unavailability of transportation through no fault of Mayflower Cruises & Tours. Plan and benefits offered and administered by Trip Mate, Inc.

TOUR ACTIVITY LEVEL



Free airfare from Chicago (\$1400) when reservations are made by March 31, 2021.

Beginning April 1st, please call for updated air promo details.

Complimentary Home or Local roundtrip transfers to Chicago O'Hare Airport.

Air itineraries may not be available until documents are received. Air seats are assigned by the airline for the entire group. Seat changes can only be attempted upon receipt of tickets and documents at which time availability may be limited. If specific seat assignments are vital to your reservation, we recommend individual air reservations rather than booking air with the group.

With Travelers Protection Plan - \$850 per person deposit
Without Travelers Protection Plan- \$400 per person deposit

Deposit due within 5 business days of making reservation.
Please be sure to send a copy of your reservation form and signed liability form.
Final payment due on January 14th, 2022. .

FOR RESERVATIONS OR INFORMATION CONTACT:

Mayflower Cruises & Tours
Group Sales Department

800-728-0724

Please mention the University of Wisconsin - Whitewater

UW-Whitewater Contact - Amy Oeding

262-472-7033

oedinga@uww.edu



2021 RIVER CRUISING & SMALL SHIP ADVENTURES

Terms and Conditions

Tours	Land Tour with Air* With TPP Coverage	Land Tour Only With TPP Coverage	Without TPP Coverage	Final Payment
Emerald: Rhine, Danube, Eastern Europe	\$850 Deposit per person	\$750 Deposit per person	\$400 Deposit per person	90 Days
Emerald: Sensations Lyon and Provence, Portugal and Douro River	\$869 Deposit per person	\$799 Deposit per person	\$400 Deposit per person	90 Days
Treasures of the Pharaohs	\$799 Deposit per person	\$700 Deposit per person	\$400 Deposit per person	90 Days
Emerald: Splendors of Europe, Cruising the Adriatic, Galapagos Islands, Best of China and Yangtze River	\$899 Deposit per person	\$799 Deposit per person	\$400 Deposit per person	90 Days
Imperial Charms of Russia, Majestic Mekong, Treasures & Temples of Vietnam and Cambodia	\$1,099 Deposit per person	\$999 Deposit per person	\$400 Deposit per person	90 Days
Discover Chile's Patagonia	\$999 Deposit per person	\$899 Deposit per person	\$400 Deposit per person	90 Days
Scenic: Rhine Highlights; Gems of Danube; Splendor of the Seine; Christmas Markets Cruise	\$949 Deposit per person	\$899 Deposit per person	\$400 Deposit per person	90 Days
Scenic: Jewels of Europe River Cruise	\$1,149 Deposit per person	\$1,049 Deposit per person	\$400 Deposit per person	90 Days

Payment Information : Listed below is a schedule of deposit and final payment due dates. You will note that the first category includes an optional Travelers Protection Plan (TPP) which is to be paid within five business days after making your reservation. Please see "Travelers Protection Plan (TPP)" section on the next page for further explanation of this benefit.

Refund and Cancellation Policy: Payments for land, air and cruise arrangements (less the deposit amount) will be refunded when cancellations are received prior to the final payment due date noted above. Deposits are non-refundable unless the optional Travelers Protection Plan (TPP) is purchased at the time of booking. When the optional Traveler Protection Plan is purchased and it is necessary to cancel your reservation, you will be refunded all payments, including the deposit amount, less the TPP premium. All refunds will be processed by Trip Mate, Inc. Please go to www.tripmate.com/wpF431G for details on the coverage for the Traveler Protection Plan.

***Exception:** If you purchase non-refundable airline tickets from Mayflower Cruises & Tours, the TPP does not provide a refund for the airline tickets in the event of a cancellation or a return transportation benefit if you must return home early. You will be charged the TPP premium for the land tour only. Any changes made to the reservation after final payment that alters the tour itinerary will result in cancellation charges as listed below. If you have purchased the Travelers Protection Plan, the premium will be applied to offset the cancellation charges.

Should you choose not to purchase our TPP, the following per person cancellation charges will be assessed for all tours and optional excursion costs:

- 91 days or more prior to departure: Deposit Amount
- 90 days to day of departure: 100% of total tour
- No refund on unused portions of the tour

Exclusions for the Cancellation Fee Waiver: Mayflower Cruises & Tours reserves the right to alter its Refund and Cancellation Policy when a substantial amount of cancellation or postponement of travel is attributable to: conditions resulting from an act of God, natural or man-made disaster, fire, government action, civil disorder, war, hostilities between nations, or unavailability of transportation through no fault of Mayflower Cruises & Tours.

Tour Price Includes: All motorcoach transportation noted in the tour itinerary, round trip airport transfers on the tour departure and return dates (only) if air is purchased through Mayflower, services of the Tour Manager and driver, lodging, sightseeing, taxes, admissions, gratuities for bellmen and waiters for included meals, as well as Mayflower Money. Included meals are clearly noted in the touring description. Air transportation is available upon request, at additional cost for all tours.

What is Not Included on the Tour: The land price of your tour does not include airfare to the tour departure point; any inter-country air; airline luggage charges; items of a personal nature; meals not included on the itinerary; sightseeing attractions listed as "optional excursions" and gratuities to the full time Tour Manager, motorcoach driver, all airport skycaps, van or limo drivers, local guides or ship crew. Transfers between airport and hotel are not included unless you purchase air from Mayflower and travel on tour dates. Baggage fees assessed by the airlines are not included in the air price if you purchased air from Mayflower Tours.

Airline Security Measures: The Transportation Security Administration requires that travelers provide their name **EXACTLY** to their airline as it appears on their passport to be used while traveling, along with their date of birth and gender when making reservations to fly from the U.S. When making your flight reservations through Mayflower Cruises & Tours, you will be asked for this information by our staff. Due to airline security measures, your passport must match your airline ticket name and your tour reservation name or you may be denied aircraft boarding.

Passport & Visas: Each U.S. citizen must have a valid passport. Expiration date of passport should be at least six months after the return date of the tour. If you don't have a passport, call our office and we'll tell you how to apply for one. Some countries require visas for entry by U.S. citizens. We will send instructions for visa applications if a visa is required for your tour. Holders of non-U.S. passports should contact their nearest consulate and inquire about the necessary passport or visa documentation required for entry into the countries visited. Visa fees and cost of obtaining a visa are not included in the tour price and are the responsibility of the traveler.

Medical Requirements: Many countries have immunization requirements. Some countries require foreign visitors to have valid medical insurance on entry. Requirements vary by country and can change. Please check with your travel professional or call our office for details on which tours need these requirements. Specific instructions will be sent to you at 90 days prior to departure if your tour requires these conditions. Mayflower Cruises & Tours cannot be liable for delay or denial of entry due to missing documents.

Itinerary Changes: There may be times when we may have to alter the scheduled itinerary, cruise vessels, hotels, shore excursions etc. due to weather conditions or conditions on the river in regards to water levels, locks, or other delays. Any changes in the itinerary due to these conditions will not result in eligibility for a refund. All itineraries are subject to change without prior notice and may need to be altered due to water level and other weather conditions.

2021 RIVER CRUISING & SMALL SHIP ADVENTURES

Travelers Protection Plan

Our Travelers Protection Plan consists of Pre-Departure and Post-Departure Travel Insurance Benefits. The following details apply to World Holidays that include a river cruise.

TRAVEL INSURANCE BENEFITS

The following Benefits are offered and administered by Trip Mate, Inc. Should you have to cancel your river cruise or interrupt your river cruise enroute, we offer a non-refundable Travelers Protection Plan (TPP) in our deposit schedule. If you cancel your Trip due to a covered Injury, Sickness or Death - your own or that of a Traveling Companion or Family Member - or for Other Covered Reasons, as defined, you will be reimbursed up to the Trip cost for the unused non-refundable prepaid expenses for Travel Arrangements provided by Mayflower Tours. If you interrupt your Trip due to a covered Injury, Sickness or Death - your own or that of a Traveling Companion or Family member - or for Other Covered Reasons, as defined, you will be reimbursed up to the Trip cost for the unused portion of the prepaid expenses for Travel Arrangements and/or the Additional Transportation Cost paid to return home or rejoin the Trip. This plan also provides the following travel insurance benefits. These benefits are offered and administered by Trip Mate, Inc., are underwritten by the insurance carriers listed below and are subject to the terms, conditions and exclusions of the policy:

- \$25,000 Accidental Death & Dismemberment
- \$500 Travel Delay (Up to \$100 Per Day)
- \$25,000 Medical Expense/Emergency Evacuation
- 24 Hour Worldwide Assistance Service
- \$2,000 Baggage / Travel Documents
- \$500 Baggage Delay (Up to \$100 Per Day)

Certain exclusions and limitations apply and are detailed in the Description of Coverage Brochure which will be enclosed with your deposit receipt and is also available to you, upon request, at any time prior to your purchase of the plan. For example, coverage does not apply to; suicide, normal pregnancy, war or any act of war, mental or nervous disorders. A Traveling Companion is defined as a person or persons with whom you have coordinated Travel Arrangements and intend to travel with during the Trip. Sickness or Injury must require care by a Physician and must commence while insurance is in force for you. This plan does not cover a loss that results from an illness, disease, or other condition (of you, an Immediate Family Member, Traveling Companion or Business Partner), event or circumstance which occurs at a time when this plan is not in force for you.

This plan is underwritten by United States Fire Insurance Company, Eatontown, NJ.

For complete details on the protection plan refer to the Description of Coverage Brochure enclosed with your deposit receipt and is also available to you online at www.tripmate.com/wpF431G.

Important! The Travelers Protection Plan must be purchased by the time of initial payment and may not be purchased at a later date. Not valid for residents of New York State.

Tour: _____

Departure Date: _____

Group Name: _____

Group Number: _____



For Reservations Contact: _____

Deposit Amount: \$ _____

Travel Protection Plan: \$ _____

Total Amount Enclosed: \$ _____

Final Payment Due By: _____

PAYMENT INFORMATION

Make Checks Payable To: _____

Mail Deposit To: _____

Mail Final Payment To: _____

Credit Card #: _____

Security Code: _____ Exp. Date: _____

Cardholder Name & Billing Address: _____

____ Single ____ Twin ____ Guaranteed Share*

Stateroom Category

- ☐ Riviera Deck (CAT E) ☐ Riviera Deck (CAT D)
☐ Vista Deck (CAT C) ☐ Vista Deck (CAT B)
☐ Horizon Deck ☐ Grand Balcony Suite
☐ Owners Suite

We will make every effort to accommodate your preference of cabin category. All cabins are on a first-come, first-serve basis.

Requested cabin # _____ 2nd Preference # _____

☐ One Bed ☐ Two Beds

*Mayflower's Guaranteed Share Program is available on the Riviera, Vista and Horizon Decks standard staterooms only.

IMPORTANT: Please print your name EXACTLY as it appears on your passport. We require a copy of your passport within two (2) weeks of making your reservation. Name corrections, after final payment due date or after tickets have been issued, will result in additional fees being assessed.

YOUR INFORMATION

Salutation: _____ First: _____ Middle: _____ Last: _____ Suffix: _____ Nickname: _____
(Mr., Mrs., Rev) (Please print EXACTLY as it appears on Passport) (Jr., Sr.)

Address: _____ City: _____ State: _____ Zip Code: _____

Phone: _____ Cell: _____ Email Address: _____

Passport Number: _____ Date of Issue: _____ Date of Expiration: _____

Issue City, State, Country: _____ Citizenship: _____

Date of Birth: _____ Place of Birth: _____ Gender: ☐ Male ☐ Female

Emergency Contact: _____ Relationship: _____ Phone: _____

ROOMING WITH

Salutation: _____ First: _____ Middle: _____ Last: _____ Suffix: _____ Nickname: _____
(Mr., Mrs., Rev) (Please print EXACTLY as it appears on Passport) (Jr., Sr.)

Address: _____ City: _____ State: _____ Zip Code: _____

Phone: _____ Cell: _____ Email Address: _____

Passport Number: _____ Date of Issue: _____ Date of Expiration: _____

Issue City, State, Country: _____ Citizenship: _____

Date of Birth: _____ Place of Birth: _____ Gender: ☐ Male ☐ Female

Emergency Contact: _____ Relationship: _____ Phone: _____

Please advise your departure airport for this tour: _____ ☐ Mayflower Air ☐ Writing Own Air

Agreement for Assumption of Risk, Indemnification, Release, and Consent for Emergency Treatment
University of Wisconsin – Whitewater Alumni Association
Jewels of the Rhine Tour
April 16 – 26, 2022

I, _____ (print name), age _____, desire to participate voluntarily in the University of Wisconsin – Whitewater Foundation, Inc. and Alumni Association activities and related trips.

I UNDERSTAND THAT I AM BEING ASKED TO READ EACH OF THE FOLLOWING PARAGRAPHS CAREFULLY. I UNDERSTAND THAT IF I WISH TO DISCUSS ANY OF THE TERMS CONTAINED IN THIS AGREEMENT, I MAY CONTACT GREG RUTZEN, UW-WHITEWATER VICE CHANCELLOR FOR ADVANCEMENT, AT (262) 472-3182.

Assumption of Risks:

I understand that not all risks can be foreseen and there are some risks which are unpredictable. I understand that certain inherent risks that cannot be eliminated regardless of the care taken to avoid injuries. I am aware of the risks of participation, which include, but are not limited to, the possibility of physical injury, fatigue, bruises, contusions, broken bones, concussion, paralysis, and even death. I understand that the University and the Foundation have advised me to seek the advice of my physician before participating in any strenuous physical activity. I understand that I have been advised to have health and accident insurance in effect and that no such coverage is provided for me by the University or the Foundation. **I know, understand, and appreciate the risks that are inherent in the above-listed programs and activities. I hereby assert that my participation is voluntary and that I knowingly assume all such risks.**

Signature: _____ **Date:** _____

Signature of Parent or Guardian
(If Participant is under 18*): _____ **Date:** _____

Hold Harmless, Indemnity and Release:

In consideration of my participation in these activities, I, for myself, spouse, heirs, personal representatives, estate or assigns, agree to defend, hold harmless, indemnify and release the University of Wisconsin-Whitewater and the UW-Whitewater Foundation, Inc., and their officers, directors, employees, agents, volunteers, and all others who are involved, from and against any and all claims, demands, actions, or causes of action of any sort on account of damage to personal property, or personal injury, or death which may result from my participation in the above-listed program. This release includes claims based on the negligence of the University of Wisconsin-Whitewater and/or the UW-Whitewater Foundation, Inc., and their officers, directors, employees, agents, and volunteers, but expressly does not include claims based on their intentional misconduct or gross negligence. **I understand that by agreeing to this clause I am releasing claims and giving up substantial rights, including my right to sue.**

Signature: _____ **Date:** _____

Signature of Parent or Guardian
(If Participant is under 18*): _____ **Date:** _____

Consent for Emergency Treatment:

I authorize the University of Wisconsin-Whitewater and/or the UW-Whitewater Foundation, Inc. and its designated representatives to consent, on my behalf, to any emergency medical/hospital care or treatment to be rendered upon the advice of any licensed physician. I agree to be responsible for all necessary charges incurred by any hospitalization or treatment rendered pursuant to this authorization.

Signature: _____ **Date:** _____

Signature of Parent or Guardian
(If Participant is under 18*): _____ **Date:** _____

*If your son, daughter or ward will be under 18 while participating in University of Wisconsin-Whitewater activities and related trips, it is our policy to request your agreement to the above terms, on behalf of your minor son, daughter or ward.