



University of Wisconsin
Whitewater

College of Arts
and Communication

The Department of Theatre/Dance presents

A PLACE WITH THE PIGS

by Athol Fugard
directed by Bruce Cohen



TRAITOR
SAFE
FEAR
FORSAKE
EXISTENCE
HERO
DEFECTOR
NATION
GUILT
COUNTRY
VALUES
FEAR
SAFETY
PARTY
MEMORIAL

Oct. 5 - 8 @ 7:30 pm

Oct. 9 @ 2:00 pm

Barnett Theatre

This production may contain material that is triggering for some audiences.

A PLACE WITH THE PIGS

by Athol Fugard

This production may contain material that is triggering for some audiences.

CAST

Pavel Ivanovitch

Bryce Giammo

Praskovya Ivanovitch

Erin McKee

The State

Emma Dutcher

Ensemble

Maggie McNulty

CREATIVE

Director

Bruce Cohen

Stage Manager

Abigail Brandt

**Assistant Stage
Manager**

Sarah Castelli

Technical Director

Ruth Conrad-Proulx

Choreographer

Barbara Lynn Grubel

Vocal Coach

Alena Holmes

**Scenic Designer
Co-Lighting Designer**

Eric Appleton

Costume Designer

Tracey Lyons

Co-Lighting Designer

Samuel Hess

Sound Designer

Tyler Lantta

Projection Designers

Eric Appleton
Samuel Hess

Props Master

Abby Frey

Mentors

Stage Management
Ruth Conrad-Proulx

"A Place with the Pigs" is presented by arrangement with Concord Theatricals
on behalf of Samuel French, Inc. www.concordtheatricals.com

A PLACE WITH THE PIGS

PRODUCTION TEAM

Light Board Operator

Alexis Gunderson

Sound Board Operators

Lochlainn Patterson, Lucas Poli

Video & Projections Operator

Trevor Brilhart

Scenery Run Crew

Meg Hayes, Natalie Meikle

Costume Run Crew

Moira Kowalski

Scene Shop Technical Assistants

Kate Diedrich, Samuel Hess, Samantha Ness,
Abby Smith-Lezama, Mary Sportiello

Costume Shop Technical Assistants

Abigail Brandt, Katherine Griepentrog, Moira Kowalski,
Natalie Meikle, Lydia Oestreich

Prep Crew

Katie Aldred, Jonathan Alicea, Daniel Bahr, Paul Borden, Trevor Brilhart,
Sarah Castelli, Gina Digieso, Makayla Fedler, Amanda Gorsuch, Alexis
Gunderson, Kirsten Gutkowski, Valerie Gyorke, Meg Hayes, Ally Jaynes,
Caleb Ketter, John Kirsch, Myles Lockhart, Ryan Meverden, Katie
Monroe, Lillian Nicholas, Lochlainn Patterson, Ariana Peterson, Madison
Repass, Jadon Schneider, Joshua Stoughton, Michael Thao, Carter
Waelchli, Madelyn Welbel, Joe Zehr

THE VIDEOTAPING OR MAKING OF ELECTRONIC OR OTHER
AUDIO AND/OR VISUAL RECORDINGS OF THIS PRODUCTION
AND DISTRIBUTING RECORDINGS OR STREAMS IN ANY MEDIUM,
INCLUDING THE INTERNET, IS STRICTLY PROHIBITED, A VIOLATION OF
THE AUTHOR(S)'S RIGHTS AND ACTIONABLE UNDER UNITED STATES
COPYRIGHT LAW. FOR MORE INFORMATION, PLEASE VISIT:
<https://concordtheatricals.com/resources/protecting-artists>

artist profiles



**BRYCE
GIAMMO** (Pavel
Ivanovitch) is
a sophomore
BFA Theater
Performance
major with a

minor in dance and has had a blast being a part of *A Place with the Pigs*. Previous UW-Whitewater acting credits include *Vanity Fair* (Actor 3 understudy), *The Misanthrope* (Philante), and *Antigone* (Creon). This will be Bryce's first live performance at UW-Whitewater and it feels good to be back on stage again.



ERIN MCKEE
(Praskovya
Ivanovitch)
Erin is a junior
BFA Theatre
Performance
major and

minoring in Vocal Performance. She would like to thank everyone for all of the hard work they put into this production, especially with the limited time for rehearsal.



**EMMA
DUTCHER**
(The State) is
a freshman
Music Education
major at UW-
Whitewater.

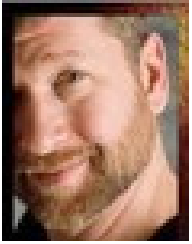
Participating in the world of theatre since middle school, previous credits include *The Wizard of Oz*, *Guys and Dolls*, *You Can't Take it With You*, and many others.



**MAGGIE
MCNULTY**
(Ensemble) This
is Maggie's first
show at UW-
Whitewater. She
is a sophomore

pursuing a major in Human Resource Management and a minor in theatre. Previous shows include *Chicago*, *Beauty and the Beast*, *Godspell*, *Grease*, *You Can't Take it With You*, *Legally Blonde* etc. She thanks the cast and crew for their hard work and dedication through this whole process, and her family and friends for the continuous support.

artist profiles



BRUCE COHEN

(Director)

Professor

Cohen teaches Directing for the Stage, Theater History, Devised

Performance and leads the BSE-Theater Education track.

He has taught for Denison University, Weber State University, the New World School of the Arts and was Director of the Department of Theater at Arkansas State University-Beebe. A director, actor and produced playwright for close to three decades;

Professor Cohen is a full member of the Stage Directors and Choreographers Society, holds affiliation with Actors Equity Association and is a former Arkansas State Chair of the Kennedy Center American College Theater Festival. Prior to his career as a university professor and administrator, Bruce ran several professional theatre companies including the award-winning Utah Musical Theatre. Professor Cohen holds a Bachelor of Fine Arts Degree in Acting from Adelphi University and a

Master of Fine Arts Degree in Directing for the Stage from The University of Alabama. <http://bruceevancohen.wixsite.com/portfolio>

ABIGAIL BRANDT (Stage

Manager) This is Abigail's first show in the role of Stage Manager. She is excited to work on this production and to experience a live production (with masks of course!). Abigail was previously the Assistant Stage Manager on the UW-Whitewater productions of *Le Misanthrope* and *God of Carnage*.

SARAH CASTELLI (Assistant

Stage Manager) Sarah is a freshman Theatre major with an emphasis on Stage Management and this is her first production at UW-Whitewater. She has had a great time working with the cast and creative team on this production and is excited to be back to in-person theatre.

artist profiles

RUTH CONRAD-PROULX

(Technical Director) Ruth has been a professional theatre manager and technician specializing in production management and technical direction in producing theatrical venues for the past 20 years. She has worked alongside professionals and students alike to meet the ever present challenges each production presents, finding learning experiences everywhere. At UW-Whitewater she oversees the stage management program, the scene shop, electrics, sounds and run crew labs in the Department.

BARBARA LYNN GRUBEL

(Choreographer) Barbara is originally from Land O' Lakes, WI. She has an extensive professional career dancing, choreographing and teaching on four continents. During her 16 years in NYC she danced in the companies of Ralph Lemon, Douglas Dunn, Dan Wagoner, Bill Young and David Dorfman. She has taught nationally and internationally at many prestigious institutions and festivals including the

American Dance Festival, Virginia Commonwealth University, UW-Milwaukee Professional Graduate Program and the Rockefeller Institutional Linkages Program in Japan, Korea and Chile. Her dance for camera work *Remember* premiered at the Oklahoma Dance Film and was chosen for the Midwest Regional Alternative Dance Festival and the American College Dance Association Regional Conference. Her stage work has been chosen many times to represent UW-Whitewater at the ACDA Regional Conference. Besides choreographing for the annual Dancescapes, she also has choreographed for numerous musical productions for the department. She holds a BFA from UW-Milwaukee and an MFA from Arizona State University.

artist profiles

ALENA HOLMES (Vocal Coach) Alena is a Professor and the Coordinator of Music Education at the University of Wisconsin-Whitewater. Originally from Belarus, Alena Holmes started her career in her native country where she taught general music, choir, music theory and piano, worked as a musician and singer with popular bands and concert organizations and had numerous appearances on popular Belarusian TV and radio shows. Currently, in addition to her research and teaching, Alena Holmes is a singer, songwriter and producer performing in educational, professional, and community contexts throughout the U.S.

ERIC APPLETON (Scenic Designer, Co-Lighting Designer, Co-Projection Designer) Eric is the Associate Professor of Scenic and Lighting Design in UW-Whitewater's Department of Theatre/Dance. Recent designs include UW-Whitewater productions of *God of Carnage*, *Miss Lulu Bett*, and *The Addams Family Musical*. His latest book,

Drafting Fundamentals for the Entertainment Classroom is due to be released in December.

TRACEY LYONS (Costume Designer) Tracey has designed for the CBC, Lincoln Theatre Guild, The Huron Playhouse, Madison Ballet, Madison Theatre Guild, American Folklore Theatre, UW- Madison Music Department and many other theatres. She has toured internationally with *Sesame Street Live*. Her professional scope includes classical and contemporary theatre, dance, opera, and musicals. She authored [Sewing Techniques for Theatre](#) and co-authored [Teaching Introduction to Theatrical Design](#) (Focal Press). During the summer of 2017, she directed *Rounding Third*. Her MFA is in Costume Design and Technology from Wayne State University and BA from CSB/SJU.

artist profiles

SAMUEL HESS (Co-Lighting Designer, Co-Projection Designer) This is Samuel's sixth production at UW-Whitewater in the role of Lighting Designer. This past summer Samuel worked with the Kids From Wisconsin, as well as on productions in Sauk Prairie and all around the state. Samuel has a deep passion for lighting and looks forward both the dramatic action of the cast as well as from the entire design team. For this production Samuel worked closely with Eric Appleton, both coming together as Co-Lighting Designers. Working close with Eric has improved Samuel's workflow and design prowess and he looks forward to working with him again.

TYLER LANTTA (Sound Designer) Tyler is currently in

his 4th year at UW-Whitewater studying music composition and electronic media. This is his first time working on a theater production. He hopes that his sound design reinforces everyone else's hard work on the production, and that everyone enjoys the play.

ABIGAIL FREY (Props Master) is delighted to be join the UW-Whitewater theatre team as the props manager for this production of *A Place with the Pigs*. She is a sophomore and current theatre tech and design student looking forward to a career in costume or set design. She would like to thank Ruth Conrad-Proulx for giving her this wonderful opportunity, and Eric Appleton for helping guide her through the process.

THEATRE/DANCE DEPARTMENT FACULTY AND STAFF

Marshall Anderson, Department Chair
Linda Allegretti, Academic Department Associate

Eric Appleton
Bruce Cohen
Ruth Conrad-Proulx

Sara J. Griffin
Barbara Grubel

Piper Hayes
Tracey Lyons
Amy Slater

DIRECTOR'S NOTES

by Bruce Cohen

A Place with the Pigs is a parable. The author has subtitled it as such, and it has been commonly regarded as a metaphoric attack on the South African apartheid system. This is a reasonable perspective, Fugard has often written about "the separateness", and made it a target of his drama. However, with this play it is not the case, or not so explicitly. Alternately, this play has been said to be about struggles with addiction.

I believe the play could be all of these and more but is, at its base, about the young soldier who inspired it. Pavel Navrotsky is real and, although Fugard takes ample liberty with his story, the absurd circumstance of a man hiding away for decades in a pig sty is historically factual. It is, indeed, a more common thing than I'd ever imagined. The historic Pavel hid out of fear. Fear of the Nazi's at the front, but also a very, valid terror of Stalin's retribution should he be discovered by his own people. Because of this fear, Navrotsky is documented to have forced his wife, Praskovya, to act as accomplice and enabler. News reporting has related that Pavel threatened Praskovya with violence to ensure this.

Yes, the play is a parable. Fugard used the historical Navrotsky to fashion our fictional Pavel and a lens through which to consider larger and more universal ideas. The most profound of these, for me, is the dynamic balance between loyalty and oppression. In this regard then, yes, it is an attack on apartheid and any other fascist or totalitarian system. The play is a commentary on the misanthropy that self-isolation and fear can magnify; a poignant reality over the last year and a half. And lastly, for myself, this is a case-study of toxic co-dependency and the parallel dynamics between a wife and abusive husband and subject and fascist state.

Media Sponsors



Cast your support for tomorrow's stars

When you purchase tickets to Theatre/Dance Department productions, it helps us continue our mission to provide high quality educational experiences for our students, as well as high quality productions for our audience. Ticket revenue is an important part of our budget, and we appreciate your support.

Another way for you to support the Theatre/Dance Department is through tax-deductible donations. The UW-Whitewater Theatre and Dance Department's 5-production season offers hands-on learning-by-doing experiences for our students.

When putting on a production they learn: Contemporary and classic acting styles, Choreography for musical theatre, Contemporary, tap and jazz dance techniques, Carpentry and project management, Sewing and costume construction, Critical thinking in research and script analysis, Scenic, lighting, sound and costume design, Science and math skills in all design and build projects, and more.

Our students use these skills to launch exciting careers in theatre, film and television, as well as stage and project management, game design, teaching and many other fields.

We hope you'll consider making a gift to support the UW-Whitewater Department of Theatre/Dance. Your gifts will support the outstanding educational experience our students have come to expect.

Your gifts make a real impact:

\$50 = Scenic paint supplies

\$100 = Sewing supplies

\$250 = Lighting supplies

\$500 = Props for musical

\$1,000 = Costumes for one show

If you have questions about supporting this good work, feel free to contact the Director of Philanthropy at 262-472-5472.

Thank you for being part of what we do.

THE KENNEDY CENTER

The Kennedy Center American College Theater Festival 50[®], part of the Rubenstein Arts Access Program, is generously funded by David and Alice Rubenstein.

Special thanks to The Harold and Mimi Steinberg Charitable Trust for supporting the John F. Kennedy Center for the Performing Arts' Kennedy Center American College Theater Festival.

Additional support is provided by The Honorable Stuart Bernstein and Wilma E. Bernstein; the Dr. Gerald and Paula McNichols Foundation; Beatrice and Anthony Welters and the AnBryce Foundation.

KCACTF is part of JFKC: A Centennial Celebration of John F. Kennedy, inspired by five enduring ideals often ascribed to JFK: Courage, Freedom, Justice, Service, and Gratitude. Support for JFKC: A Centennial Celebration of John F. Kennedy is provided by Ambassador Elizabeth Frawley Bagley, Chevron, the Blanche Irving Laurie Foundation, and Target.

Kennedy Center education and related artistic programming is made possible through the generosity of the National Committee for the Performing Arts and the President's Advisory Committee on the Arts.

This production is entered in the Kennedy Center American College Theater Festival (KCACTF). The aims of this national theater education program are to identify and promote quality in college-level theater production. To this end, each production entered is eligible for a response by a regional KCACTF representative, and selected students and faculty are invited to participate in KCACTF programs involving scholarships, internships, grants and awards for actors, directors, dramaturgs, playwrights, designers, stage managers and critics at both the regional and national levels.

Productions entered on the Participating level are eligible for invitation to the KCACTF regional festival and may also be considered for national awards recognizing outstanding achievement in production, design, direction and performance.

Last year more than 1,300 productions were entered in the KCACTF involving more than 200,000 students nationwide. By entering this production, our theater department is sharing in the KCACTF goals to recognize, reward, and celebrate the exemplary work produced in college and university theaters across the nation.

COMING NEXT



She Kills Monsters

by Qui Nguyen

directed by Sara J. Griffin

Nov. 15 - 19 @ 7:30 pm & Nov. 20 - 21 @ 2:00 pm

**Performances on 11/18 and 11/20 will have social distanced seating.*

Meet Agnes, an average girl who wished her life had more adventure. After a family tragedy, she finds herself skeptically discovering the world of Dungeons & Dragons through her little sister's eyes, getting much more than she bargained for on a journey of self-discovery and understanding.

Combat, comedy, and love are at the heart of this fantastic campaign. Directed by Sara J. Griffin, Qui Nguyen offers a heart-pounding homage to the geek and warrior within us all.

tickets.uww.edu



262-472-2222