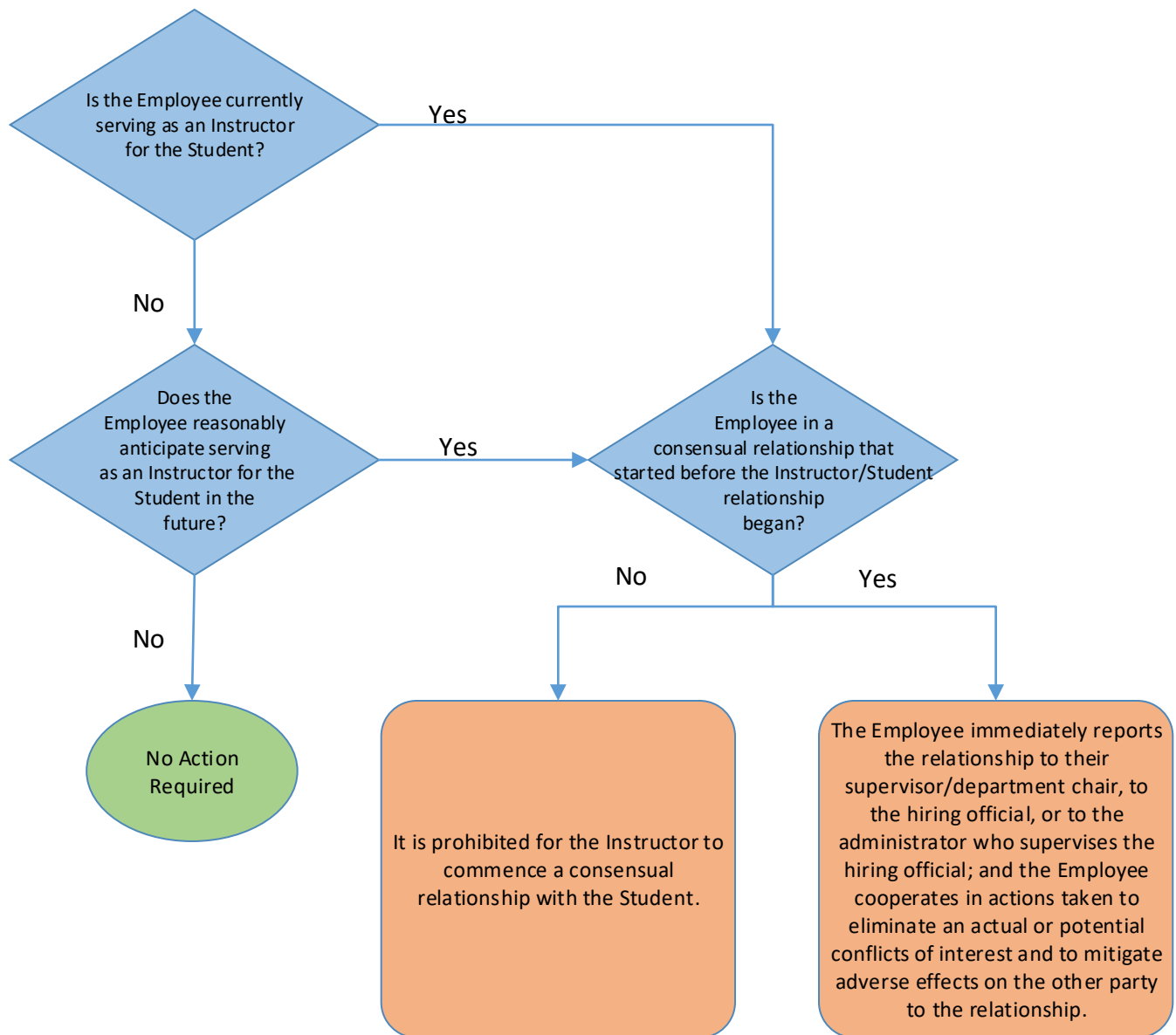


University of Wisconsin – Whitewater Consensual Relationships

Appendix A: Flowchart for Instructor/ Student Relationships



Policy Definitions

Consensual Relationships: A consensual relationship refers to any relationship, either past or present, which is romantic, physically intimate, or sexual in nature, and to which the parties consent or consented. This includes marriage.

Employees: Employees include, but are not limited to, administrators, faculty, academic staff, university staff, student staff, graduate assistants, and interns.

Students: Students are individuals enrolled in courses at the university, including online.