

Young Auditorium, UW-Whitewater – Technical Specifications – Revised 01/2015

Young Auditorium

UNIVERSITY OF WISCONSIN-WHITEWATER

930 W. Main St. Whitewater, Wisconsin 53190 262-472-4444

www.uww.edu/youngauditorium

AUDITORIUM STAFF

Director:	Ken Kohberger	262-472-5630	kohbergk@uww.edu
Assistant Director:	Shannon Dozoryst	262-472-1432	dozoryst@uww.edu
Development:	Shawn Werner	262-472-6224	werners@uww.edu
Technical Director:	Hans Pregler	262-472-5631	preglerh@uww.edu
House Manager:	Mike Morrissey	262-472-1487	morrissm@uww.edu
Marketing:	Stacy Sherman	262-472-5705	shermans@uww.edu
Office Manager:	Malinda Hunter	262-472-4869	hunterm@uww.edu

STAGE SPACE

Proscenium Opening – 46’W x 27’H
 Deck – 95’-4” x 41’-9” Plaster Line to Back Wall
 Apron – 46’ - 0” x 5’-2” Plaster Line to Pit Edge
 Orchestra Pit – 40’ x 11’8” – approx 450 sq. ft.
 Adjustable to 8’-0” below stage level
 Apron overhangs U.S. wall of pit by 4’0”

SEATING CAPACITY.....1300

Main Floor.....	752
Lift Area.....	48
Balcony.....	500

FLY SYSTEM

Main Drape -55’ x 32’
 Guillotine or traveler from SR deck
Rigging System
 Type: Single Purchase counterweight
 Weight: 25,000lbs available
 Line Sets: 46 sets at 7 in. o.c. – 6 lift lines
 Arbors: 1,200 lbs capacity
 Battens: 63’ long with 63’ of travel from deck
 Grid: 68’ above deck, overhung
Permanent Installations (from P.L.)
 Orchestra Shell Ceiling (2) at 7’-3” & 15’-5”
 Electric Pipes at 5’- 6, 13’-1, 21’-10, 28’-10.
 Upstage Black Traveler (1) at 26’-6”

STAGE FLOOR

Sprung oak floor-dark finish-no traps
 No penetrations allowed.
 Dance Floor - black/gray - 59’ x 39

LOADING DOCK

Loading Door: 8’ W x 10’H - 45’ to stage
 Loading Dock: Dock is truck level (+48”)
 Dock plate (+/- 7”) 4’-8” wide
 Ramp (+/-21”) 3’-0” wide

WARDROBE

Location: Upstage left on stage level
 Facilities: Washer and Dryer, Steamer

DRESSING ROOMS (4) all stage level S.R.

Make-up stations, toilet and shower each
 Star (2): Max. capacity 6,
 Chorus (2): Max. capacity -18

KACHEL CENTER

Rehearsal, auxiliary dres. rm, warm-ups.
 Prior arrangements required.
 32 ft. x 68 ft. - Sprung hardwood floor

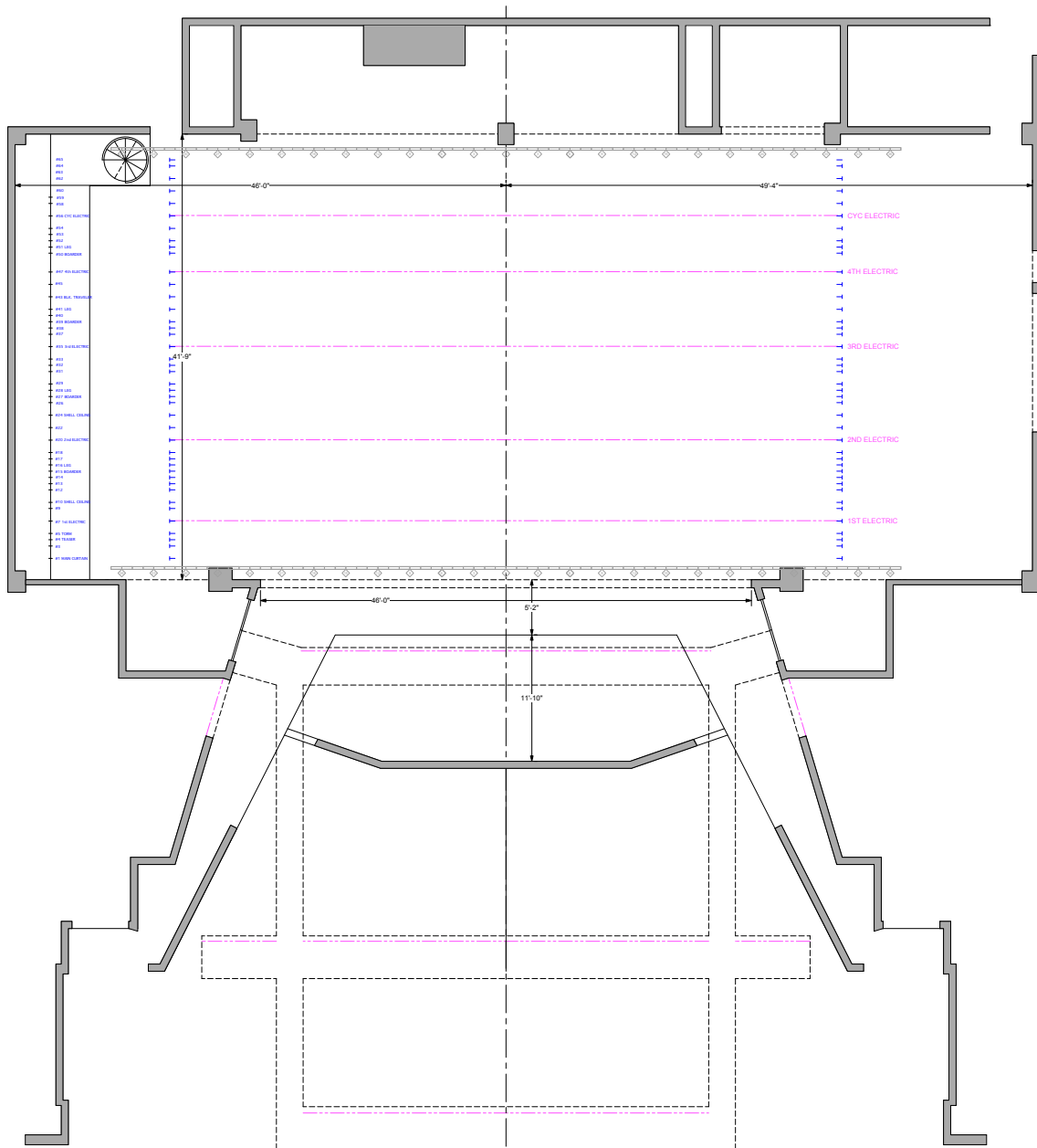
STAGE MANAGER’S PANELS

Locations: DSL pros. wall and Light Booth
 Controls lighting in the auditorium chamber
 Paging mic location. Intercom main stations

TOURING PRODUCTION OFFICE

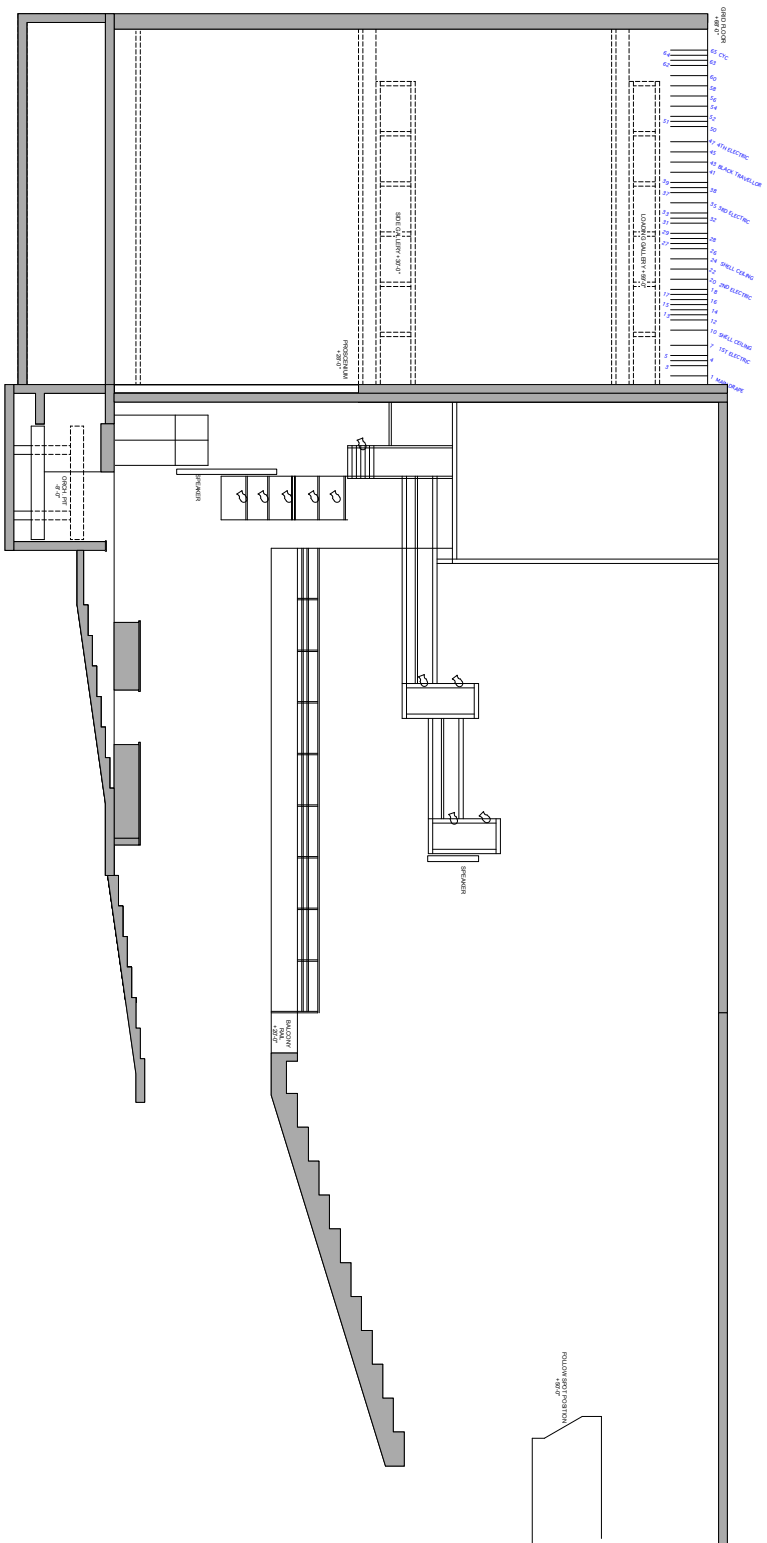
At Loading Dock
 1 phone line (calling card), desk, chairs
 Internet Acces

Young Auditorium, UW-Whitewater - Technical Specifications - Revised 01/2015



VECTORWORKS EDUCATIONAL VERSION

Young Auditorium, UW-Whitewater – Technical Specifications – Revised 01/2015



Young Auditorium, UW-Whitewater – Technical Specifications – Revised 01/2015

ELECTRICS

(All connectors are grd 20 amp stage pin)

CONTROL CIRCUITS (384)

336 devoted stage dim circuits - 384 dimmers available in rack
24 devoted non-dim circuits

<u>Front of House</u>	<u>Position</u>	<u>Width</u>	<u>Distance to Prosc.</u>	<u>Height Above Floor</u>	<u>House Circuits</u>
	1st Catwalk	42'	4'	28'	24
	2nd Catwalk	58'	34'	33'	30
	3rd Catwalk	38'	49'	37'	24
	Box Booms	6'	13'	15'-29'	16 ea
	Balcony Rail	3 @ 12'	72'	20'	6

(all F.O.H. circuits run through transfer panel DSL)

On Stage

Rigged Electric Battens (4) - 63' long - 28 circuits each
21 Grid drop boxes - 3 circuits each
5 circuits - SR gallery
19 circuits - wall pockets

INSTRUMENTS

<u>QTY</u>	<u>MAKE/MODEL</u>	<u>SIZE</u>	<u>DEGREE</u>	<u>WATTS</u>
26	ETC Source 4	6 x 22	14	575
30	ETC Source 4	6 x 16	19	575
40	ETC Source 4	6 x 12	26	575
50	ETC Source 4	6 x 9	36	575
8	ETC Source 4	6 x 4.5"	50	575
4	ETC Source 4	Zoom	15-30	575
42	Strand #3380	6" Fresnel	--	1000
24	ETC S4 PARs	6"	4 lens	575
24	PAR 64	8"	MFL & NSP	1000
6	Altman Far Cyc	3 circuit	--	1000/
6	Altman Strips	3 color/7.5"	--	750/
24	ETC Desire LED		various	
18	ETC Vivid LED		various	

Followspots

2 - Lycian Superstar 1275 2 - Altman Orbitor (Marc 350/16T)
Booths: (one on center - 2 at sides) - 130 ft. to proscenium

LIGHTING CONTROL

ETC Ion with 2 x 20 fader wing – Strand Network with nodes to DMX 512

TRANSFER PANEL

Located DSL with all FOH catwalk circuits. Direct DMX link to FOH located S.R.

ROAD SHOW POWER

<u>Panel</u>	<u>Phase</u>	<u>Amp</u>	<u>Use</u>	<u>Location</u>
A	3	400	Dimmers	DSL proscenium wall
B	3	400	Dimmers	DSL proscenium wall
C	3	200	Sound	DSR proscenium wall

Young Auditorium, UW-Whitewater – Technical Specifications – Revised 01/2015

VIDEO

PROJECTOR

Sanyo – PLC-XF30NL with semi long throw removable lens

SWITCHER

Videonics – MX-3000, 5 input channels

PLAYBACK

Sony DVD Player, Panasonic Blue-Ray Players, Mac Desktop,

VIDEO LINES TO STAGE

(3) coaxial/BNC lines from video control to DSR proscenium room

SCREEN

Front projection screen 18.75'h X 25'w 4:3 ratio. Stored on lineset #3

CARPENTRY

PLATFORMS

(32) 4'X8' Nivoflex Podest System decks w/various height legs

LADDERS AND LIFTS

Ladders- (1) 6ft, (1) 8ft, (2) 12ft - All ladders are fiberglass frames and in good working order.
Genie – single man lift with max height of 25'. Outrigger use is required.

TOOLS AND SHOP AVAILABILITY

Use of tools and building areas in the loading dock may be available upon request. Please check with management, with as much advanced notice as possible.

RIGGING

GALLERIES AND PIN-RAIL

Pin-rail gallery located 30'-0" above stage deck
Loading gallery located 59'-0" above stage deck

GRID IRON

Grid Located at 68' above stage deck
Access to galleries and grid via circle stairwell U.S.R.

STAGE CURTAINS

House hang is listed on rigging schedule. The following additional curtains are available:
Legs – 30' X 6" – 4 panels Scrim – 30' X 58' – 1 panel
Borders – 30' X 8' – 2 panels

COMMUNICATIONS

Intercom: Clear-Com, 2 channel - 10 headsets, 3 handsets - throughout building
Production Monitor/Page system - throughout building
Hearing Impaired – Listen System RF (packs distributed through FOH)

Young Auditorium, UW-Whitewater - Technical Specifications - Revised 01/2015

Young Auditorium - Rigging Schedule

Line #	U.S. of P.L.	House Hang	Size HxW	Permanent Hang	Show Schedule	Line #
1	2'0"	Main Drape	32 x 55 ea	***	50% Full - Burgundy	1
3	3'2"					3
4	3'9"	Border	30 x 54	***		4
5	4'4"	Leg	30 x 15 ea			5
7	5'6"	Electric #1		***		7
9	6'8"					9
10	7'3"	Shell Ceiling		***		10
12	8'5"					12
13	9'0"					13
14	9'7"					14
15	10'2"	Border	16 x 63			15
16	10'9"	Leg	36 x 15			16
17	11'4"					17
18	11'11"					18
20	13'1"	Electric #2		***		20
22	14'3"					22
24	15'5"	Shell Ceiling		***		24
26	16'7"					26
27	17'2"	Border	12 x 63			27
28	17'9"	Leg	36 x15			28
29	18'4"					29
31	19'6"					31
32	20'1"					32
33	20'8"					33
35	21'10"	Electric #3		***		35
37	23'0"					37
38	23'7"					38
39	24'2"	Border	8 x 63			39
40	24'9"	Leg	36 x 15			40
41	25'4"					41
43	26'6"	Black Traveler	32 x 33 ea	***	50% Fullness - Black	43
45	27'8"					45
47	28'10"	Electric #4		***		47
50	30'7"	Border	8 x 63			50
51	31'2"	Leg	36 x 15			51
52	31'9"					52
53	32'4"					53
54	32'11"					54
56	34'1"					56
58	35'3"					58
59	35'10"					59
60	36'5"	Black Scrim	28 x 56			60
62	37'7"	Cyc LEDs				62
63	38'2"					63
64	38'9"	Full Stage Black	28 x 63			64
65	39'4"	CYC - dove gray	28 x 58			65

Young Auditorium, UW-Whitewater – Technical Specifications – Revised 01/2015

Technical Policies

No holes in the stage floor - nails, screws, staples, stage screws, etc. are prohibited. Heavy equipment, which can damage the stage floor, may need special precautions and clearance by the Young Auditorium Technical Director.

No eating or drinking in the auditorium. Smoking is prohibited on campus.

All flash powder, explosives, fire, lasers or any dangerous device must meet all local, state, and federal fire and safety regulations and be approved by Technical Director before use.

Young Auditorium management and staff reserve the right to call for an evacuation of the audience and backstage areas in the case of an emergency. (fire, tornado, etc.)

All equipment must have proper and functional safety cables, rigging hardware, electrical cables, etc. Equipment that does not meet manufacturers safety regulations and standard theatrical practices will not be allowed on stage.

All rigging and fly-rail operations are under the discretion of the Young Auditorium staff. Any disapproval of items being flown, the rate or technique of hanging such items, or the use of the items being flown will be remedied per the Young Auditorium Technical Director's satisfaction.

Scenery construction, painting, gluing and the like are restricted to the Loading Dock. Assembly of scenery is permitted on stage. Specifics of on stage painting and construction should be discussed with the Technical Director prior to any action.

Young Auditorium allows the FOH audio mix position in the rear of the orchestra seating area, where seats have been cleared. Sound technicians are expected to operate from this position during the performance with all due respect to the audience seated nearby.

The Young Auditorium staff has the final say on the overall sound levels in the auditorium. Visiting personnel may be asked to adjust sound levels to suit the house wishes.

If your event is to be interpreted for the deaf, the interpreter will be located stage left. Seating for the Hearing Impaired is on stage left/house right.

Should the decision be made to use a sound system or portions of a system that are supplied by the Artist, the auditorium management requires an audio feed for the hearing impaired system.

Only House staff and crew, production staff and performers are allowed backstage. All production personnel must wear identification while in the backstage area.

The user will pay for damages to the premises, equipment or properties of the auditorium caused by the user, either intentionally or through negligence. It is further understood that the Auditorium will furnish artist management with a detailed statement of all such damages and cost of repair.

Strike of performance equipment will take place immediately after the final performance unless arranged in advance with the Technical Director.

